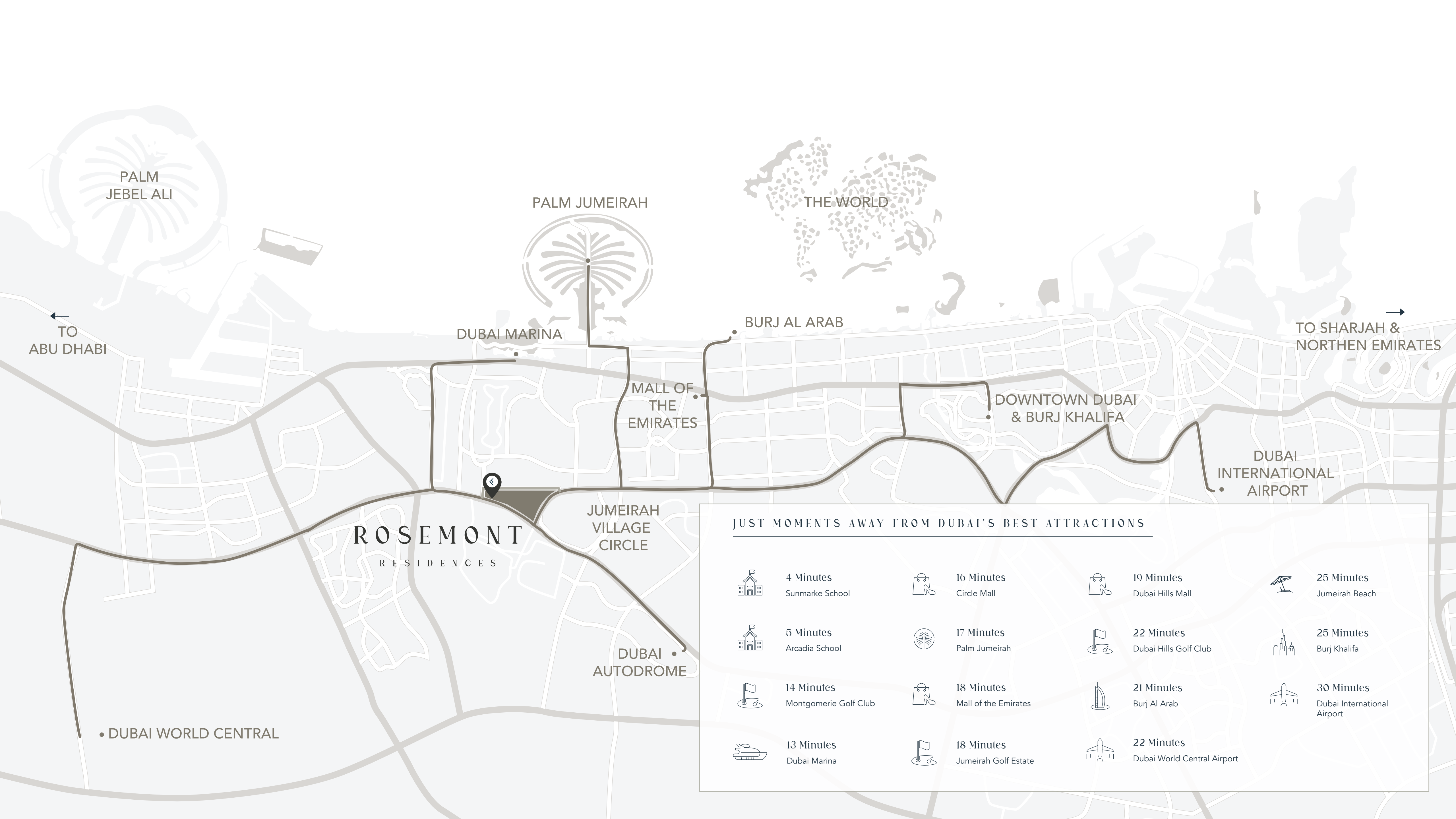




ROSEMONT

R E S I D E N C E S

PROJECT BRIEF



PALM
JEBEL ALI

PALM JUMEIRAH

THE WORLD

←
TO
ABU DHABI

→
TO SHARJAH &
NORTHERN EMIRATES

DUBAI MARINA

BURJ AL ARAB

MALL OF
THE
EMIRATES

DOWNTOWN DUBAI
& BURJ KHALIFA

DUBAI
INTERNATIONAL
AIRPORT

ROSEMONT
RESIDENCES

JUMEIRAH
VILLAGE
CIRCLE

DUBAI
AUTODROME

• DUBAI WORLD CENTRAL

JUST MOMENTS AWAY FROM DUBAI'S BEST ATTRACTIONS



4 Minutes
Sunmarke School



16 Minutes
Circle Mall



19 Minutes
Dubai Hills Mall



25 Minutes
Jumeirah Beach



5 Minutes
Arcadia School



17 Minutes
Palm Jumeirah



22 Minutes
Dubai Hills Golf Club



25 Minutes
Burj Khalifa



14 Minutes
Montgomerie Golf Club



18 Minutes
Mall of the Emirates



21 Minutes
Burj Al Arab



30 Minutes
Dubai International
Airport



13 Minutes
Dubai Marina



18 Minutes
Jumeirah Golf Estate



22 Minutes
Dubai World Central Airport

JUMEIRAH VILLAGE TRIANGLE

Jumeirah Village Triangle is a distinctive family-friendly community surrounded by lush landscaped communal areas and parks. It is home to several mixes of villas, townhouses, and apartments with a thoughtful selection of entertainment and leisure options ideal for families.

Located in District 2 of Jumeirah Village Triangle
Rosemont Residences is close to Dubai Marina,
community parks, and international schools, yet away from
the hustle and bustle of the city.

- 01 Rosemont Residences
- 02 Community Parks
- 03 JVT Water Fountain
- 04 Arcadia School
- 05 JVT Pond
- 06 Soccer Field
- 07 Basketball Courts
- 08 Basketball Pitch
- 09 Tennis Courts
- 10 Sunmarke School
- 11 Supermarket
- 12 Al Khail Avenue Mall
- 13 Dog Park



GROUND FLOOR
AMENITIES PLAN

- 01 MAIN ENTRANCE
- 02 LOBBY RECEPTION
- 03 LOBBY LOUNGE
- 04 LIBRARY WALL
- 05 COMMUNAL TABLE
- 06 LIFT LOBBY
- 07 VEHICULAR ENTRANCE / EXIT
- 08 PARKING FOR PEOPLE OF DETERMINATION
- 09 BICYCLE PARKING
- 10 DOG WASH AREA
- 11 DOG PARK



FIRST FLOOR
AMENITIES PLAN

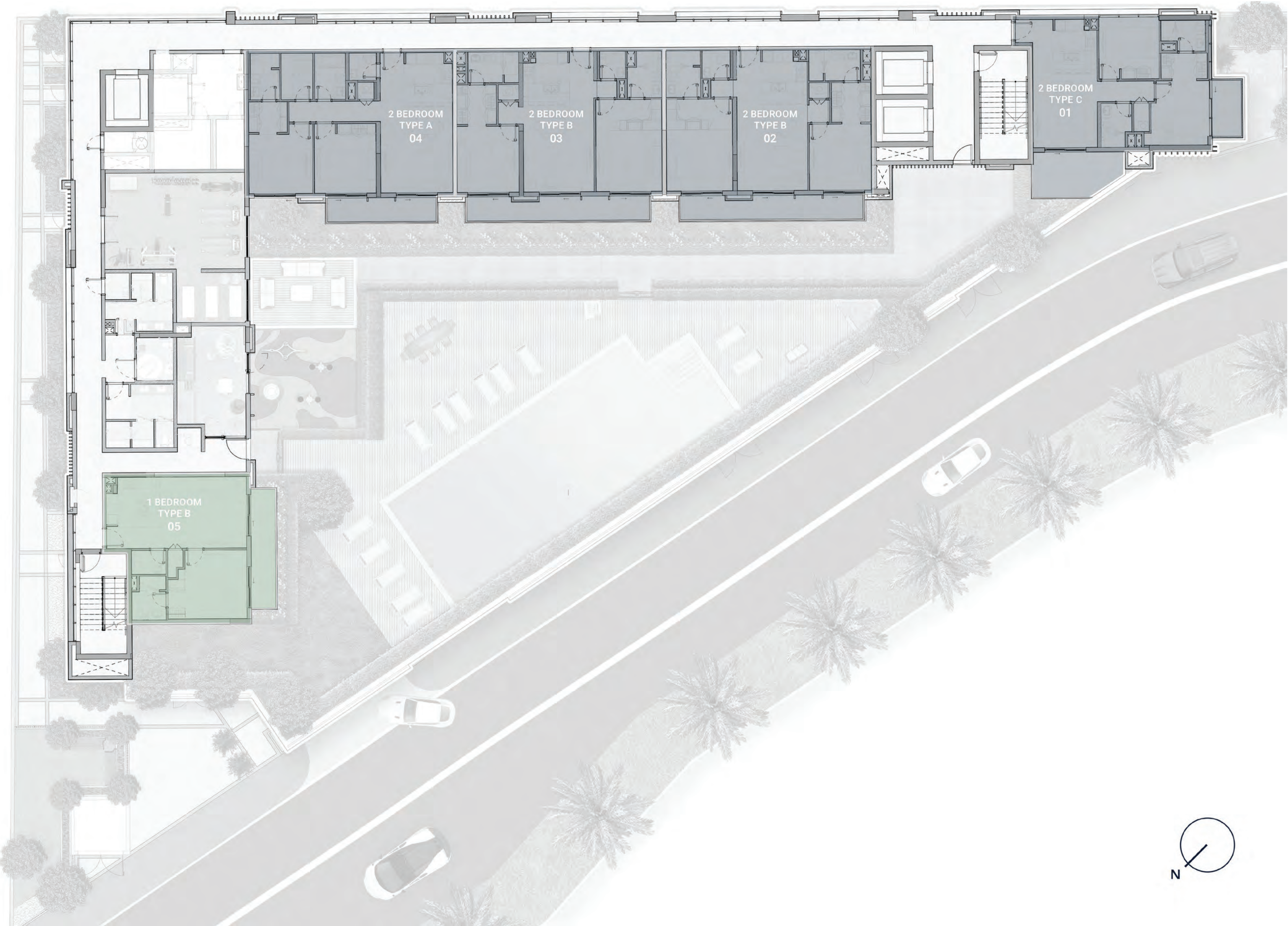
- 01 LEISURE AND LOUNGE POOL
- 02 POOL SUN LOUNGERS
- 03 OUTDOOR SHOWER
- 04 TOWEL STATION
- 05 ACCESS TO POOL DECK
- 06 OUTDOOR DINING AREA
- 07 COURTYARD
- 08 HERB GARDEN
- 09 KIDS PLAY AREA
- 10 OUTDOOR KIDS PLAY AREA
- 11 OUTDOOR LOUNGE AREA
- 12 FEMALE CHANGE ROOM
- 13 BATHROOM FOR PEOPLE OF DETERMINATION
- 14 MALE CHANGING ROOM
- 15 YOGA AREA
- 16 FITNESS STUDIO
- 17 LIFT LOBBY



TYPICAL PLAN

1ST FLOOR PLAN

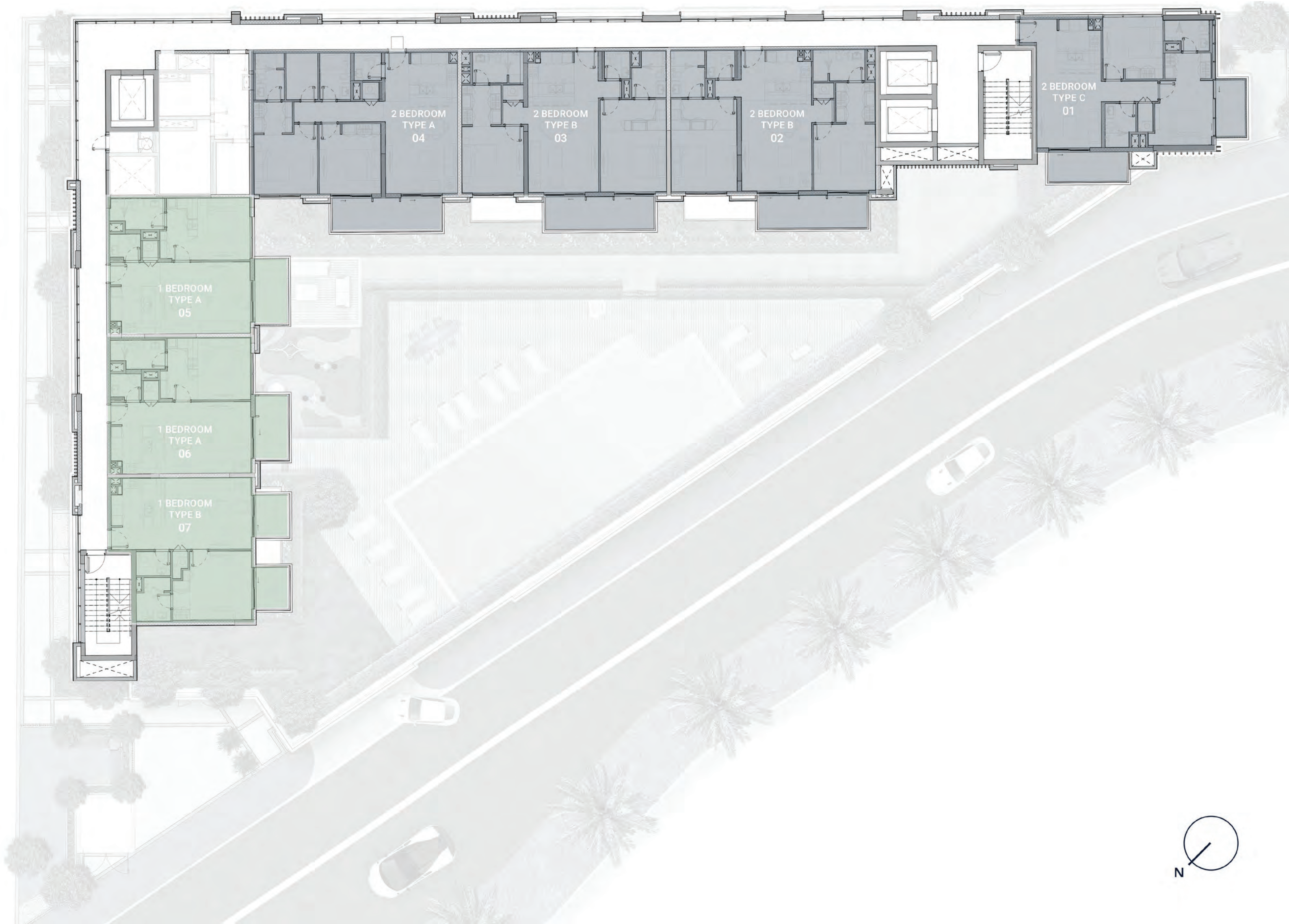
- 1 BEDROOM APARTMENTS
- 2 BEDROOM APARTMENTS



TYPICAL PLAN

2ND - 7TH FLOOR PLAN

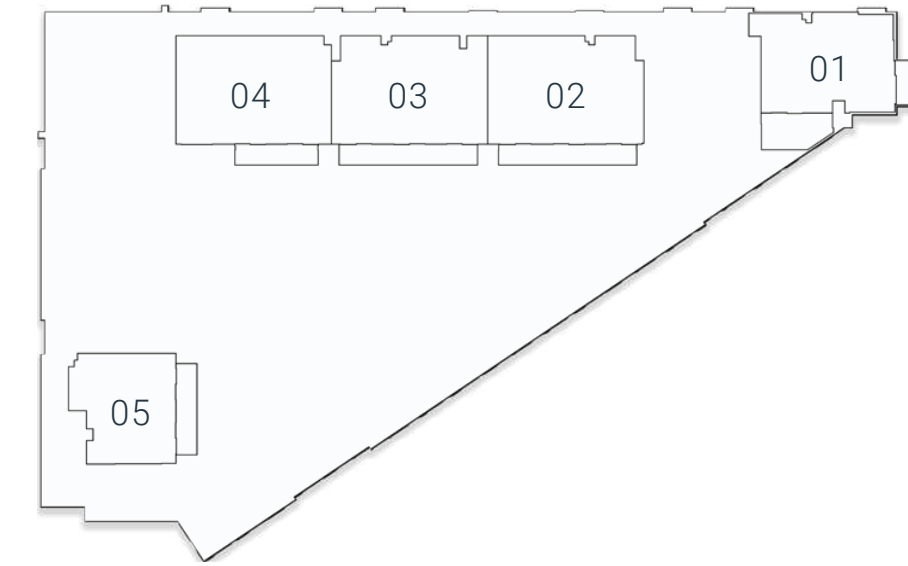
- 1 BEDROOM APARTMENTS
- 2 BEDROOM APARTMENTS



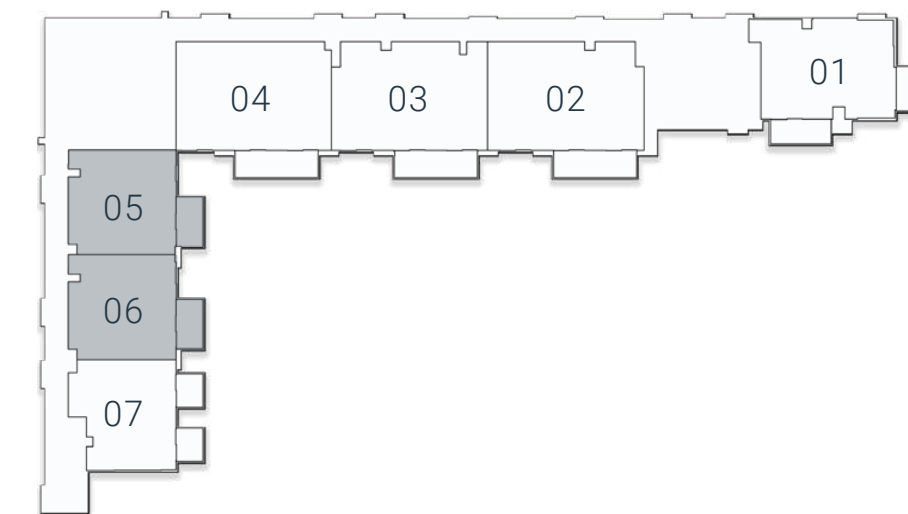
FLOOR PLAN



1ST Floor



2ND Floor - 7TH Floor

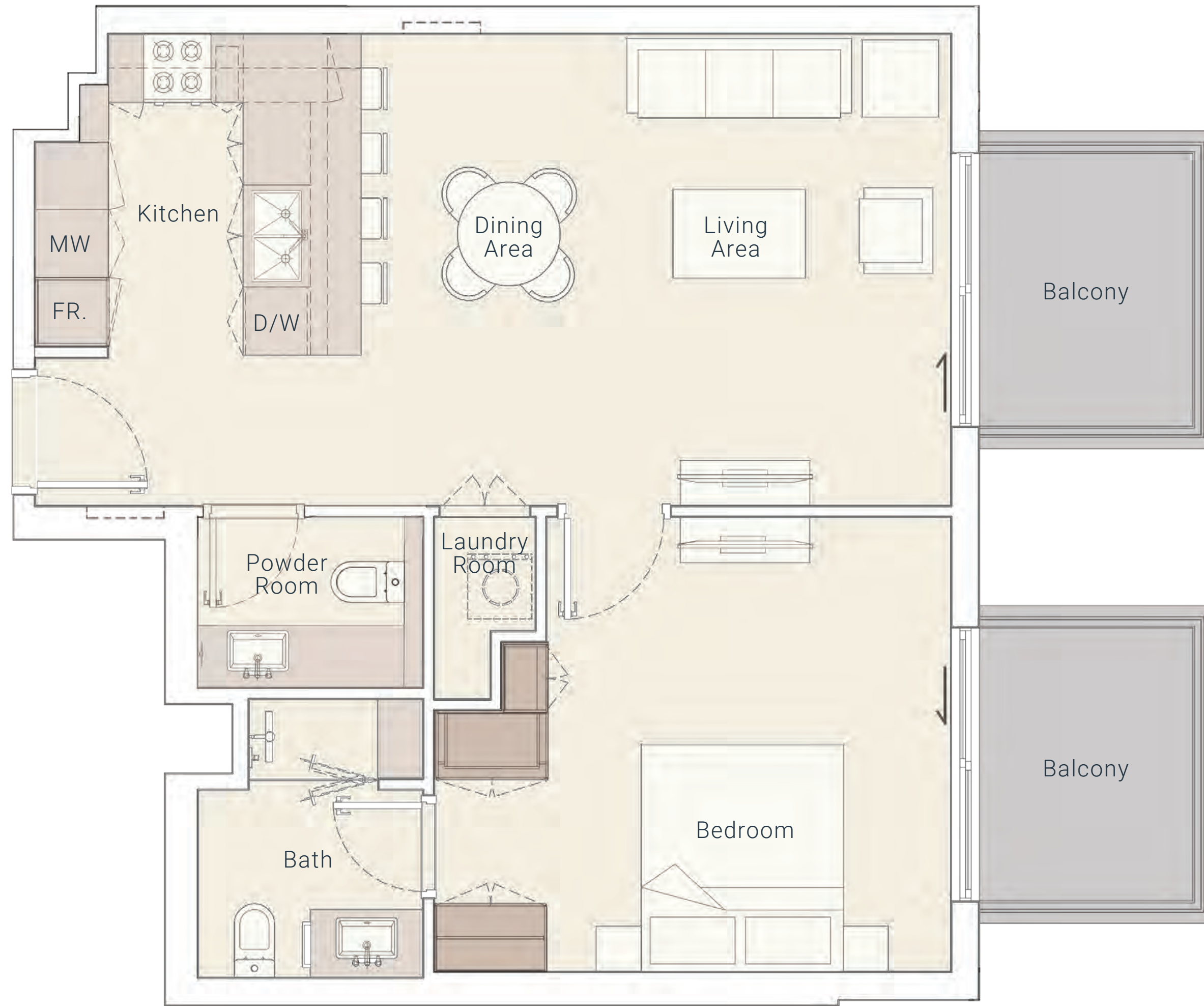


Internal Living Area 710.20 sq.ft.

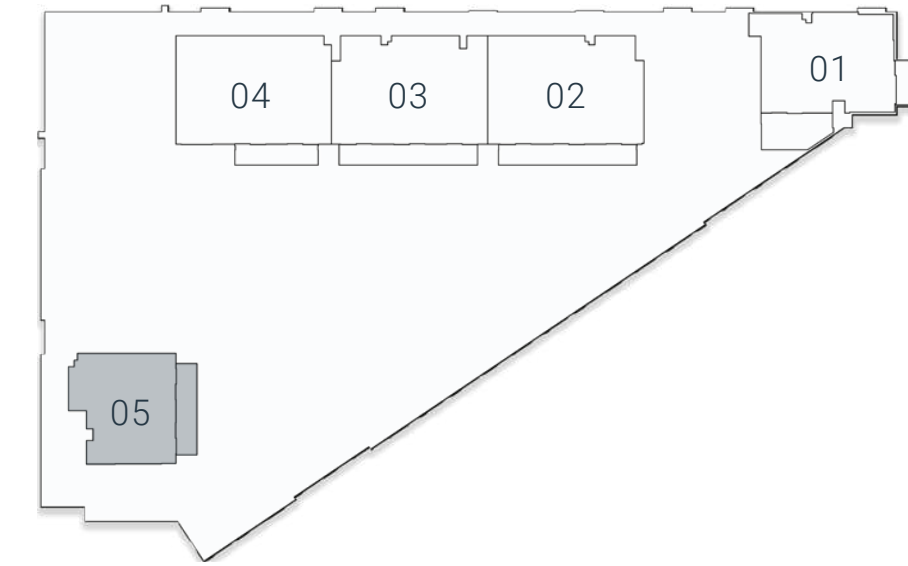
Outdoor Living Area 88.16 sq.ft.

Total Living Area 798.36 sq.ft.

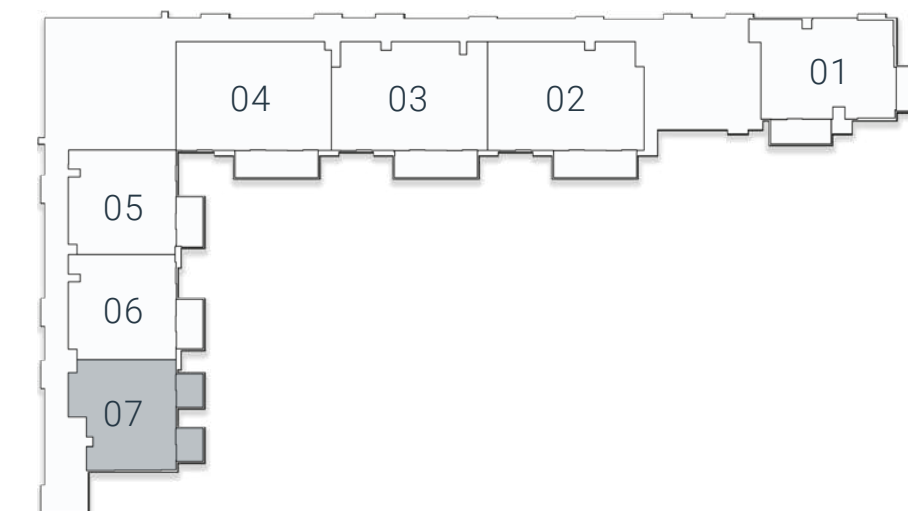
1 BEDROOM TYPE A



1ST Floor



2ND Floor - 7TH Floor



Internal Living Area 695.56 sq.ft.

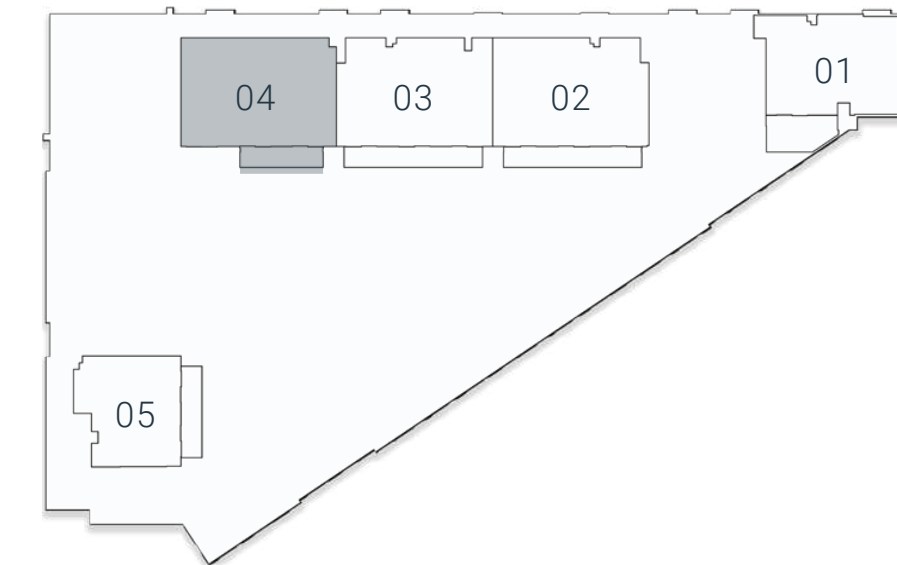
Outdoor Living Area 117.11 sq.ft.

Total Living Area 812.68 sq.ft.

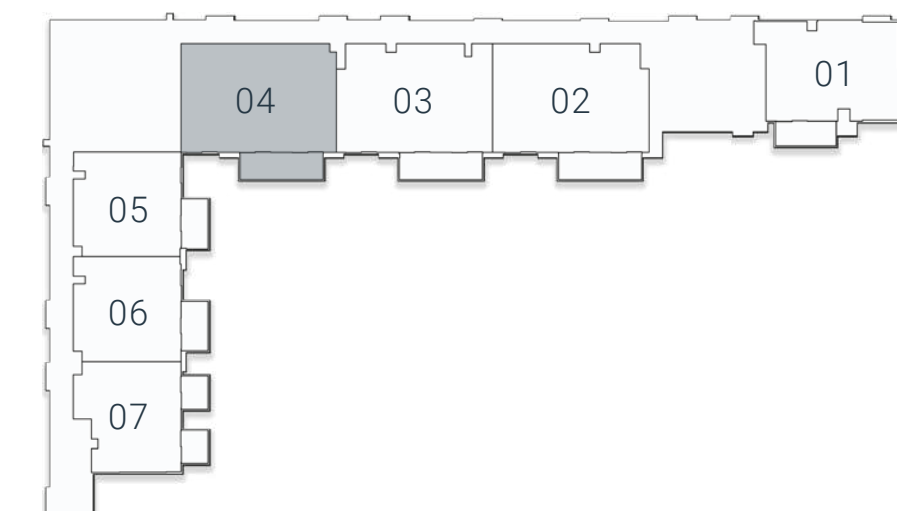
1 BEDROOM TYPE B



1ST Floor

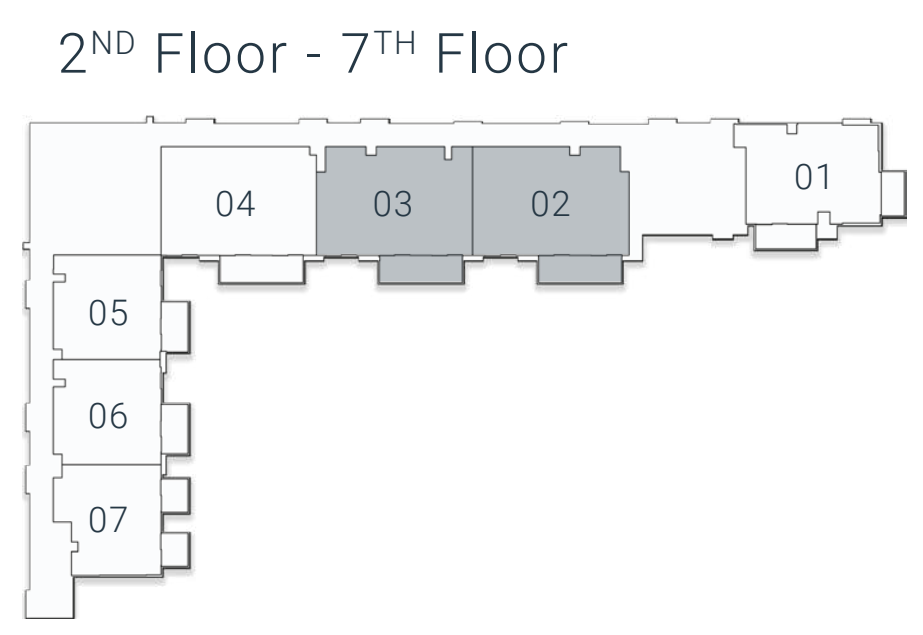
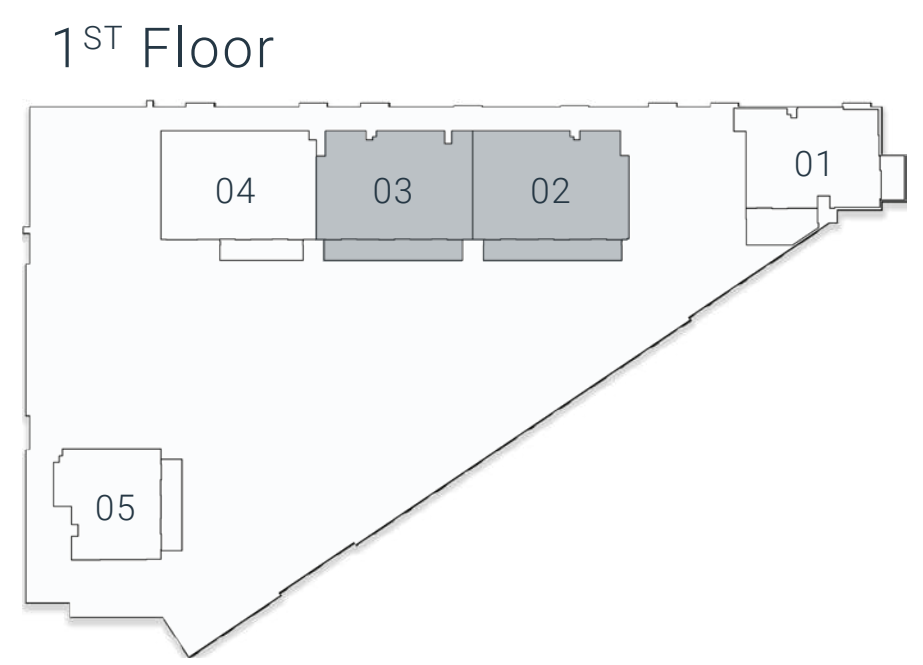
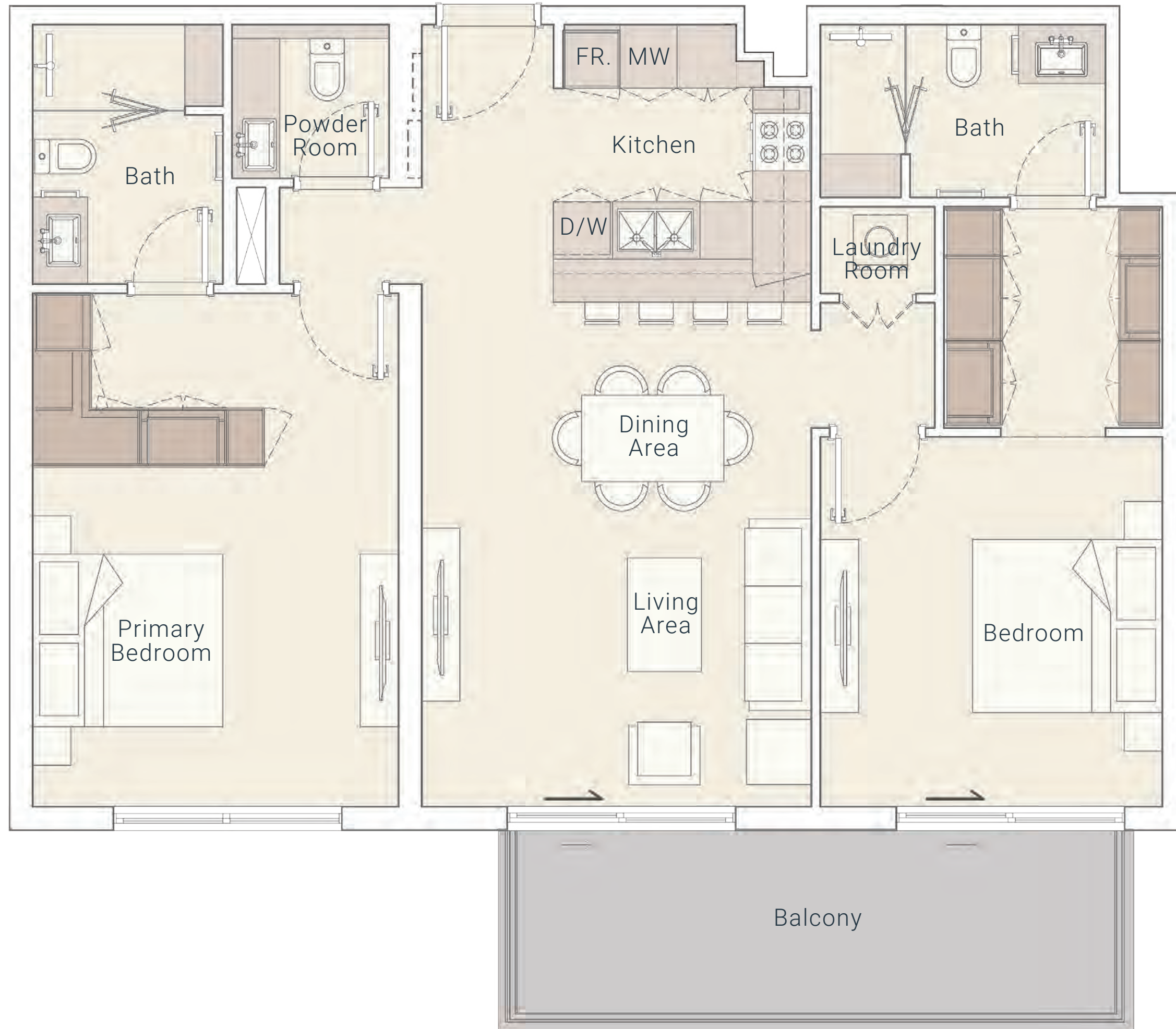


2ND Floor - 7TH Floor



Internal Living Area 1080.80 sq.ft.	Outdoor Living Area 147.36 sq.ft.	Total Living Area 1228.16 sq.ft.
-------------------------------------	-----------------------------------	----------------------------------

2 BEDROOM TYPE A



Internal Living Area 1073.81 sq.ft.

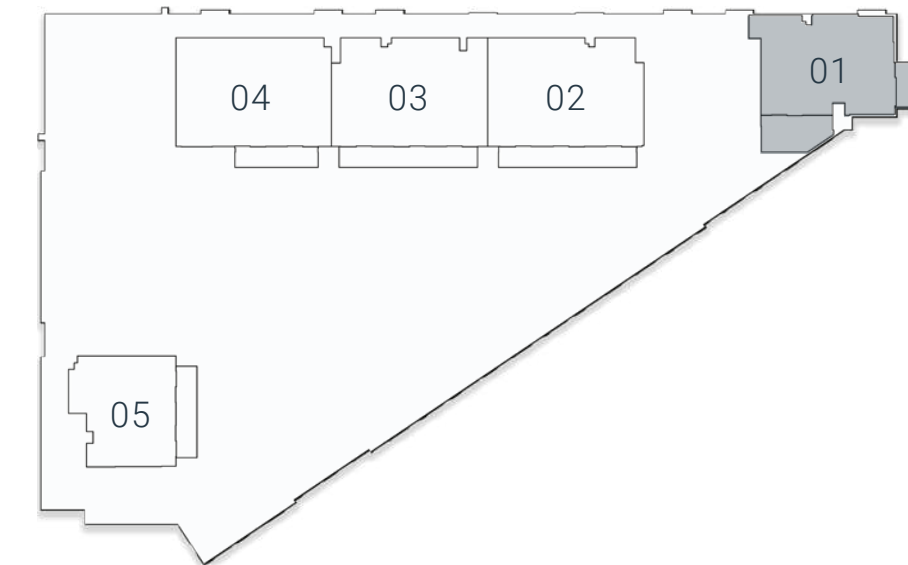
Outdoor Living Area 147.36 sq.ft.

Total Living Area 1221.17 sq.ft.

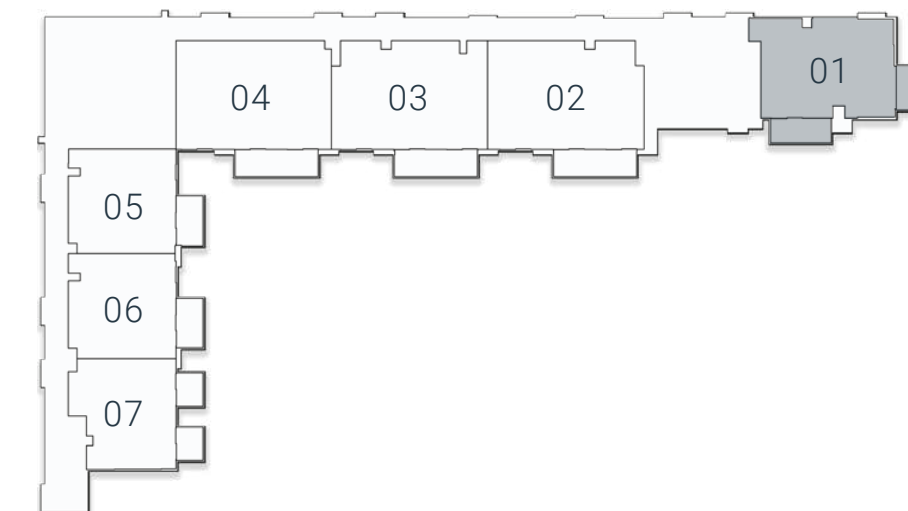
2 BEDROOM TYPE B



1ST Floor



2ND Floor - 7TH Floor



Internal Living Area 859.07 sq.ft.

Outdoor Living Area 165.55 sq.ft.

Total Living Area 1024.62 sq.ft.

2 BEDROOM TYPE C