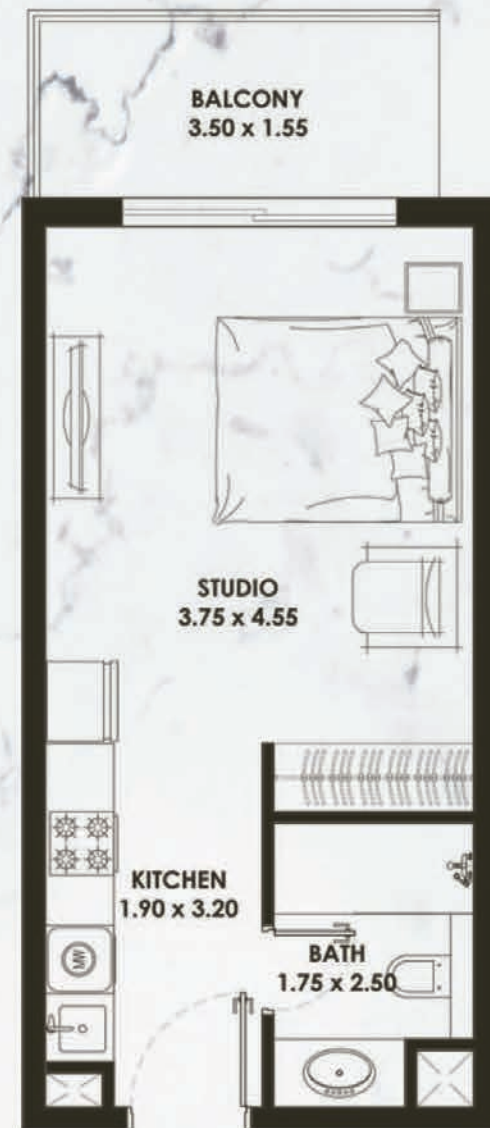




1) All information, materials, plans and amenities are approximate and provided for illustrative purposes only. The developer reserves the right to make revisions to the floor plans and any features, materials, dimensions, drawings, and amenities of the project without notice.  
2) Units areas, actual dimensions, layout, location, specifications of balcony, door, wardrobe or other fixtures may vary floor to floor and between units and are subject to revision

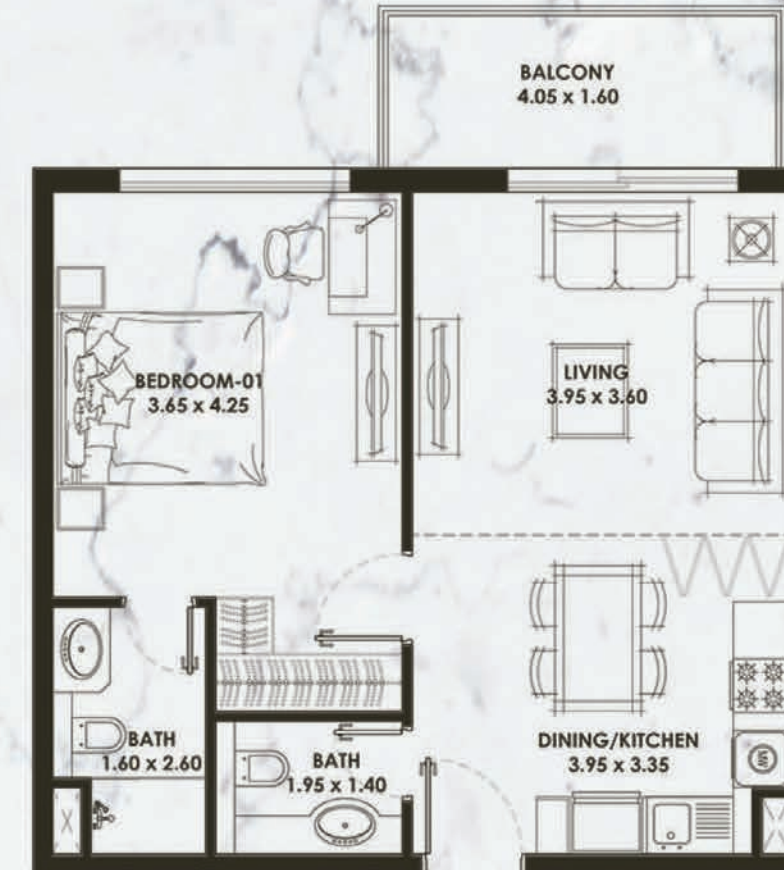
## STUDIO Floor Plan



### Studio Type 1

Area  
Apartment - 316.03 SQ. FT.  
Balcony - 73.3 SQ. FT.  
Total Area - 389.33 SQ. FT.

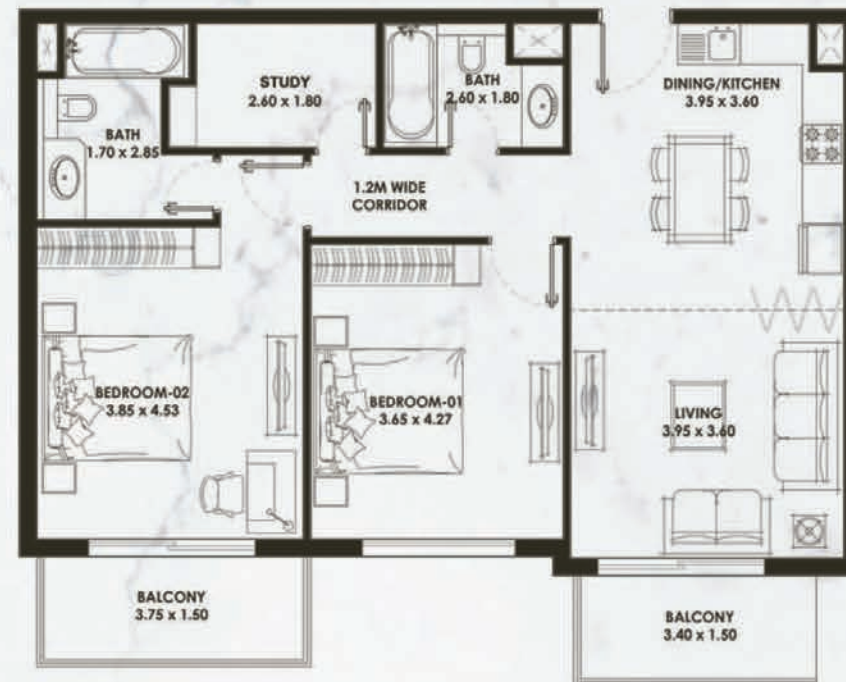
## 1 BR Floor Plan



### 1 BR Type 1

Area  
Apartment - 607.73 SQ. FT.  
Balcony - 72.98 SQ. FT.  
Total Area - 680.71 SQ. FT.

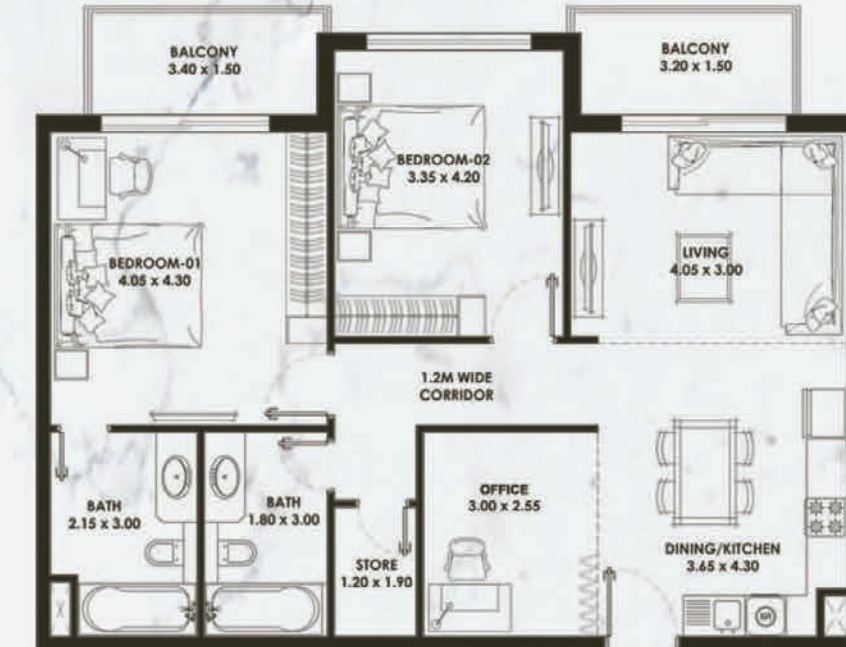
## 2 BR + STUDY Floor Plan



## 2 BR + Study

Area  
Apartment - 984.47 SQ. FT.  
Balcony- 130.67 SQ. FT.  
Total Area - 1115.14 SQ. FT.

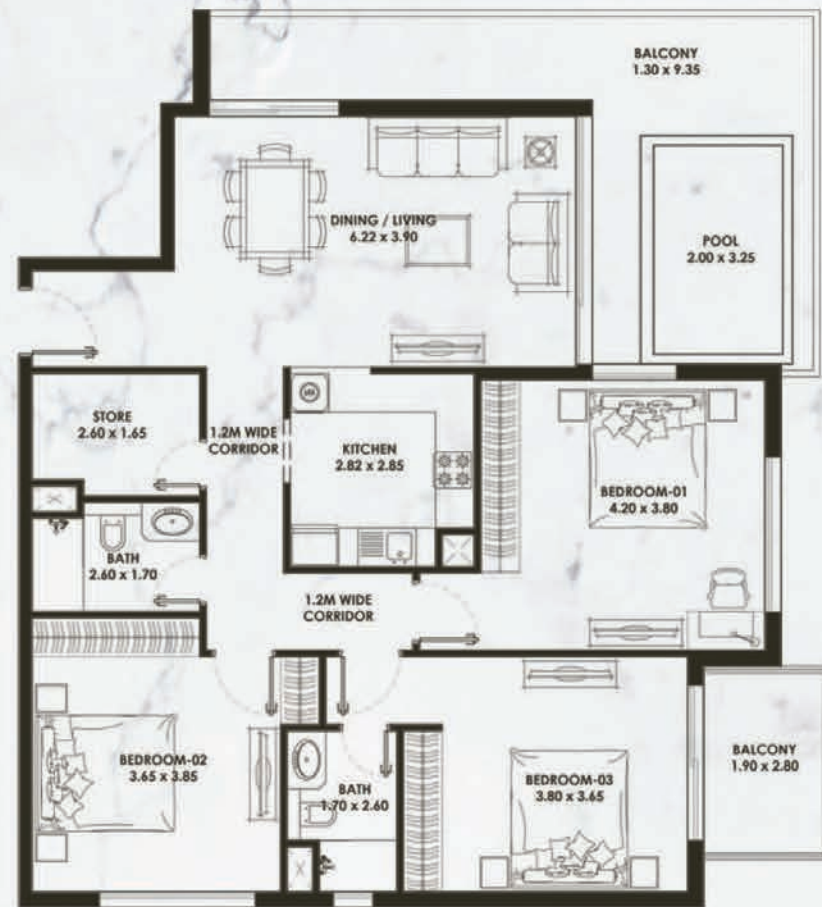
## 2 BR + OFFICE Floor Plan



## 2BR + Office

Area  
Apartment - 1020.96 SQ. FT.  
Balcony- 121.96 SQ. FT.  
Total Area - 1142.92 SQ. FT.

## 3 BR + PERSONAL POOL Floor Plan



## 3 BR + Personal Pool

Area  
Apartment - 1285.10 SQ. FT.  
Balcony - 376.52 SQ. FT.  
Total Area - 1661.62 SQ. FT.



## Dubai - An Investor's Paradise

WORLD CLASS AMENITIES

100% TAX-FREE PERSONAL INCOME

HIGH CAPITAL APPRECIATION

EASE OF INVESTMENT

HIGH RENTAL INCOME (8% - 10%).

HAPPY AND SAFE CITY

PROGRESSIVE ECONOMY

WORLDWIDE CONNECTIVITY

UAE GOLDEN VISA