

DAR AL ARKAN



W RESIDENCES DUBAI - DOWNTOWN

FLOOR PLANS



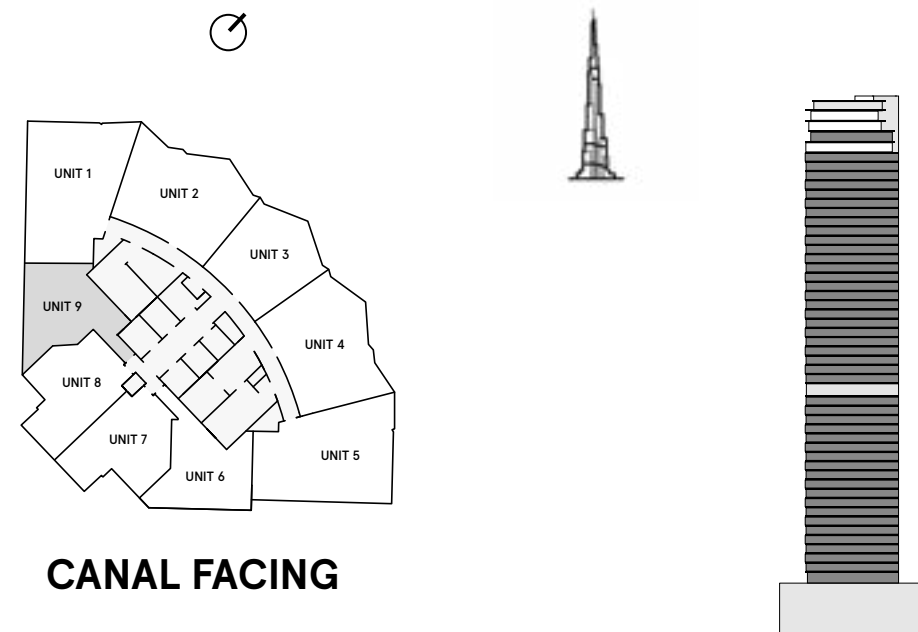
DUBAI
DOWNTOWN
THE RESIDENCES

W RESIDENCES DUBAI - DOWNTOWN

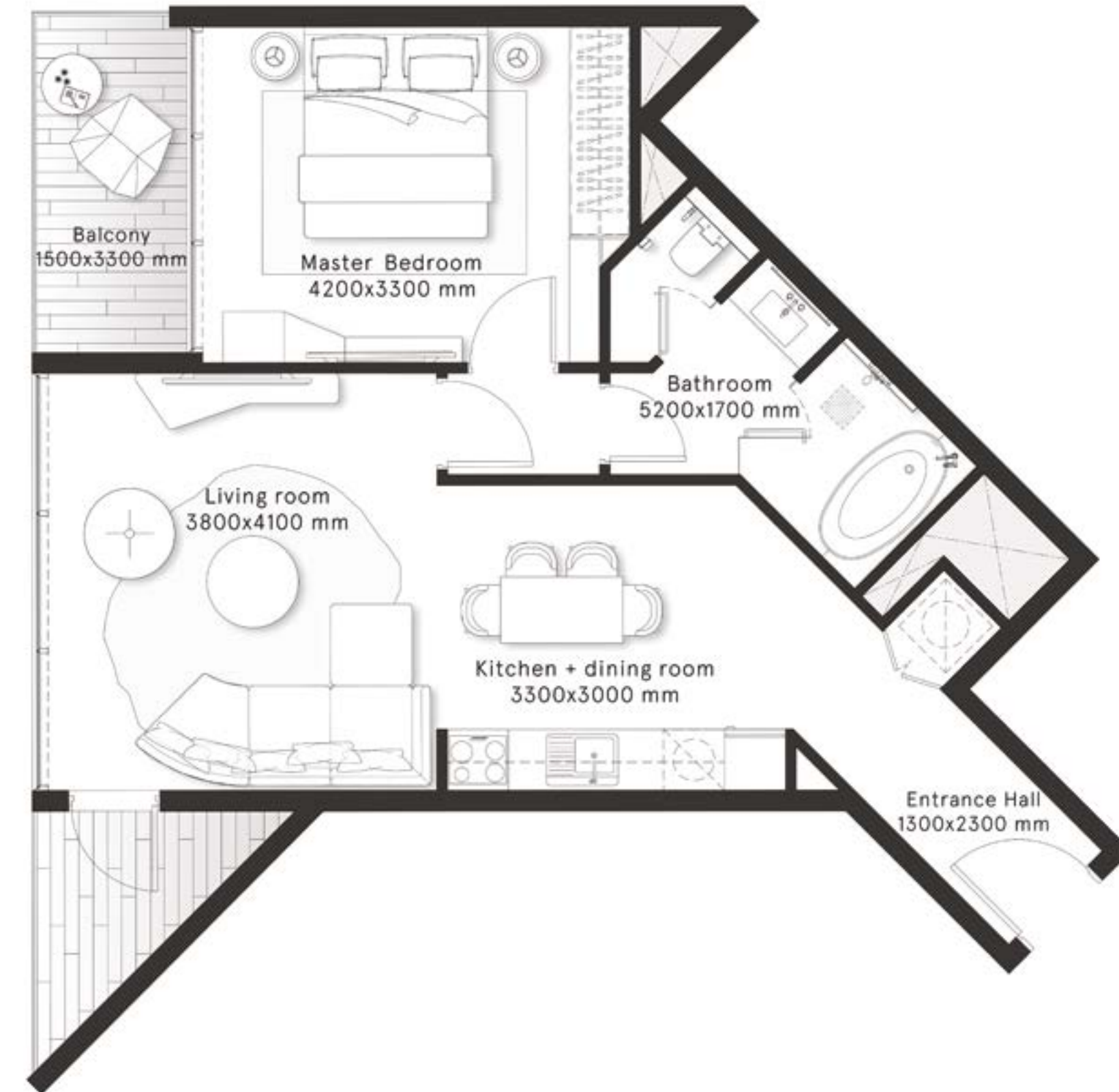
1 Bedroom Type A

FLOORS
1-46,48

CITY
VIEWS



INTERNAL AREA	656.8 sq ft
BALCONY AREA	97.7 sq ft
TOTAL AREA	754.5 sq ft

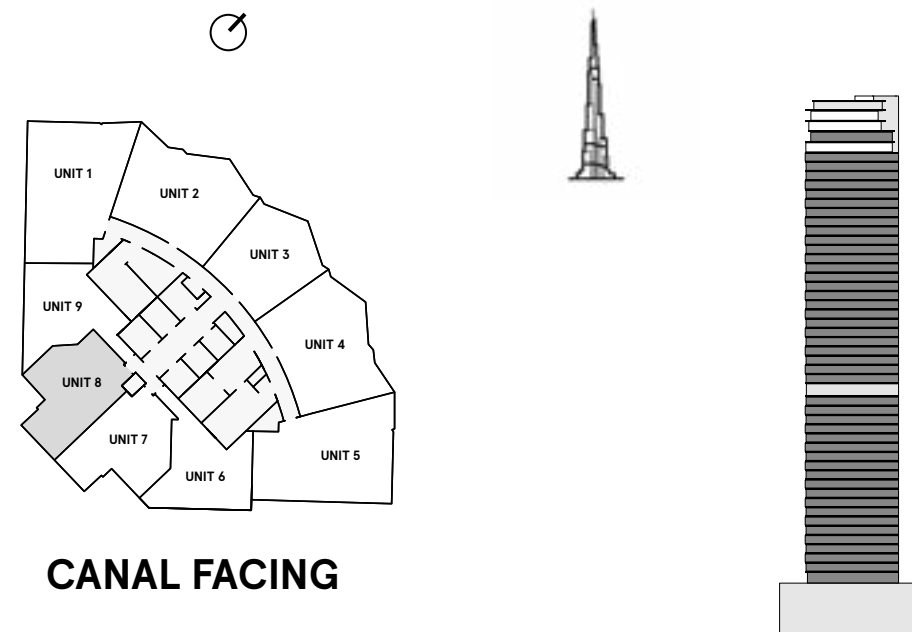


W RESIDENCES DUBAI - DOWNTOWN

1 Bedroom Type B

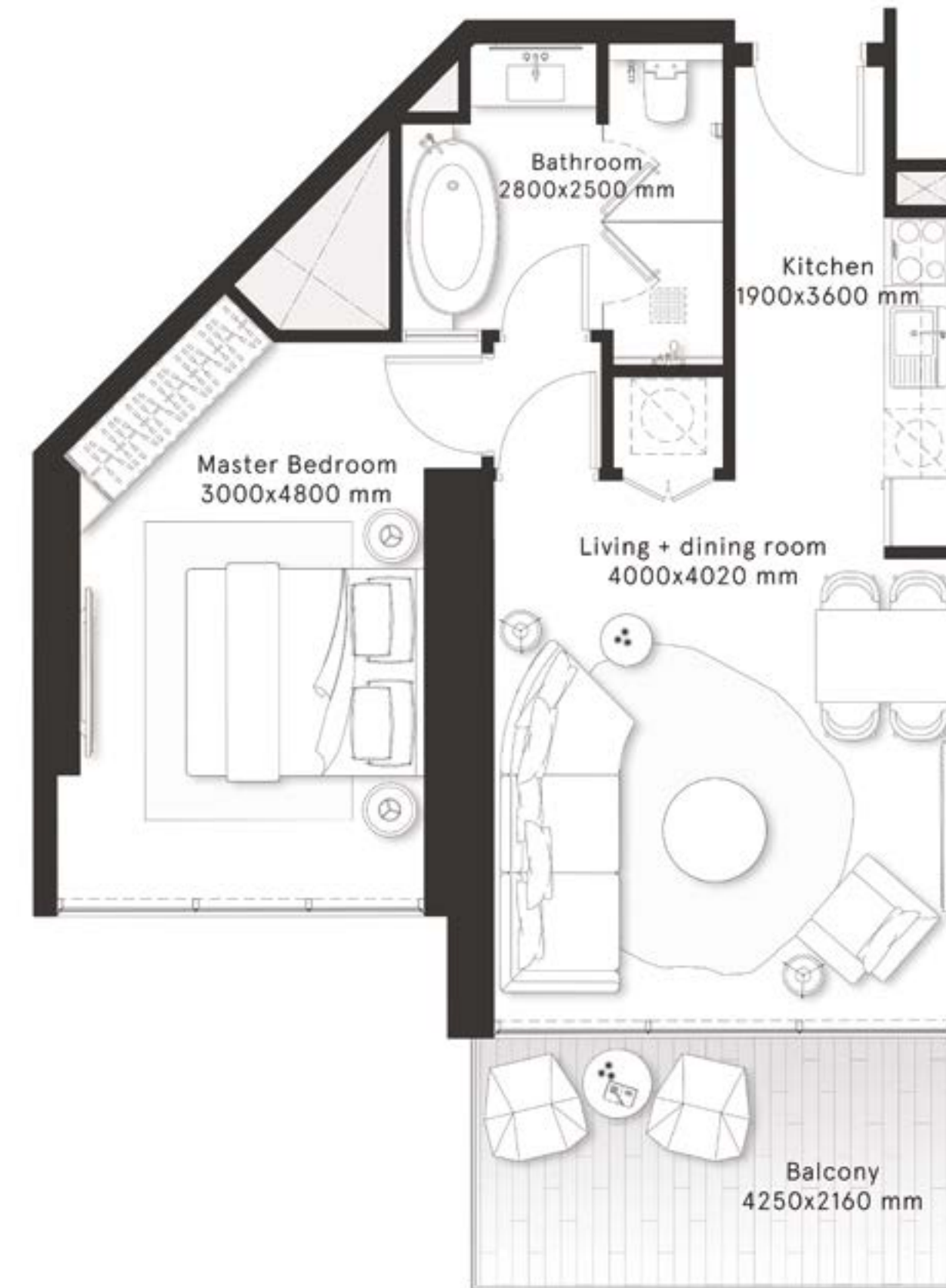
FLOORS
1-46,48

CITY
VIEWS



CANAL FACING

INTERNAL AREA	603.7 sq ft
BALCONY AREA	101 sq ft
TOTAL AREA	704.7 sq ft

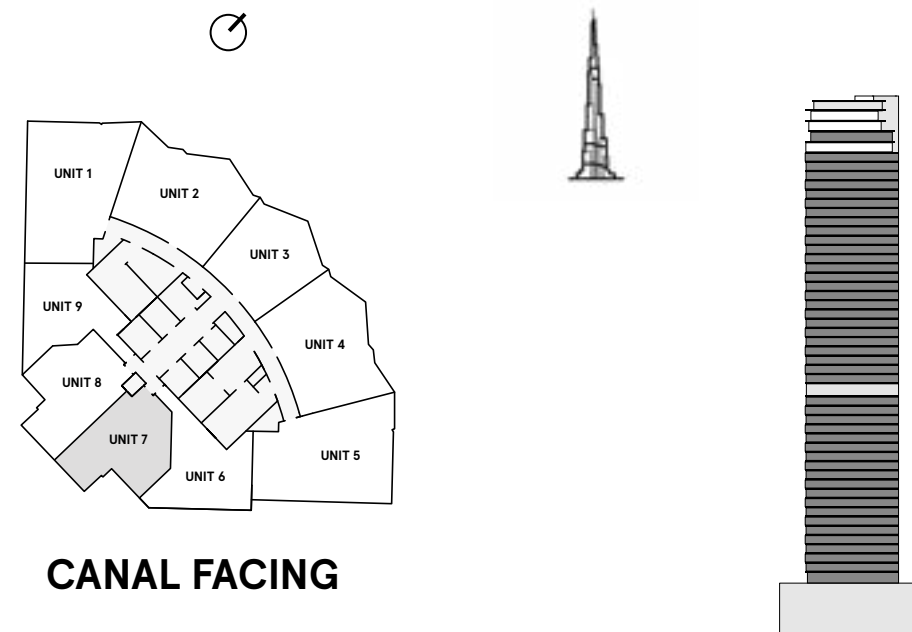


W RESIDENCES DUBAI - DOWNTOWN

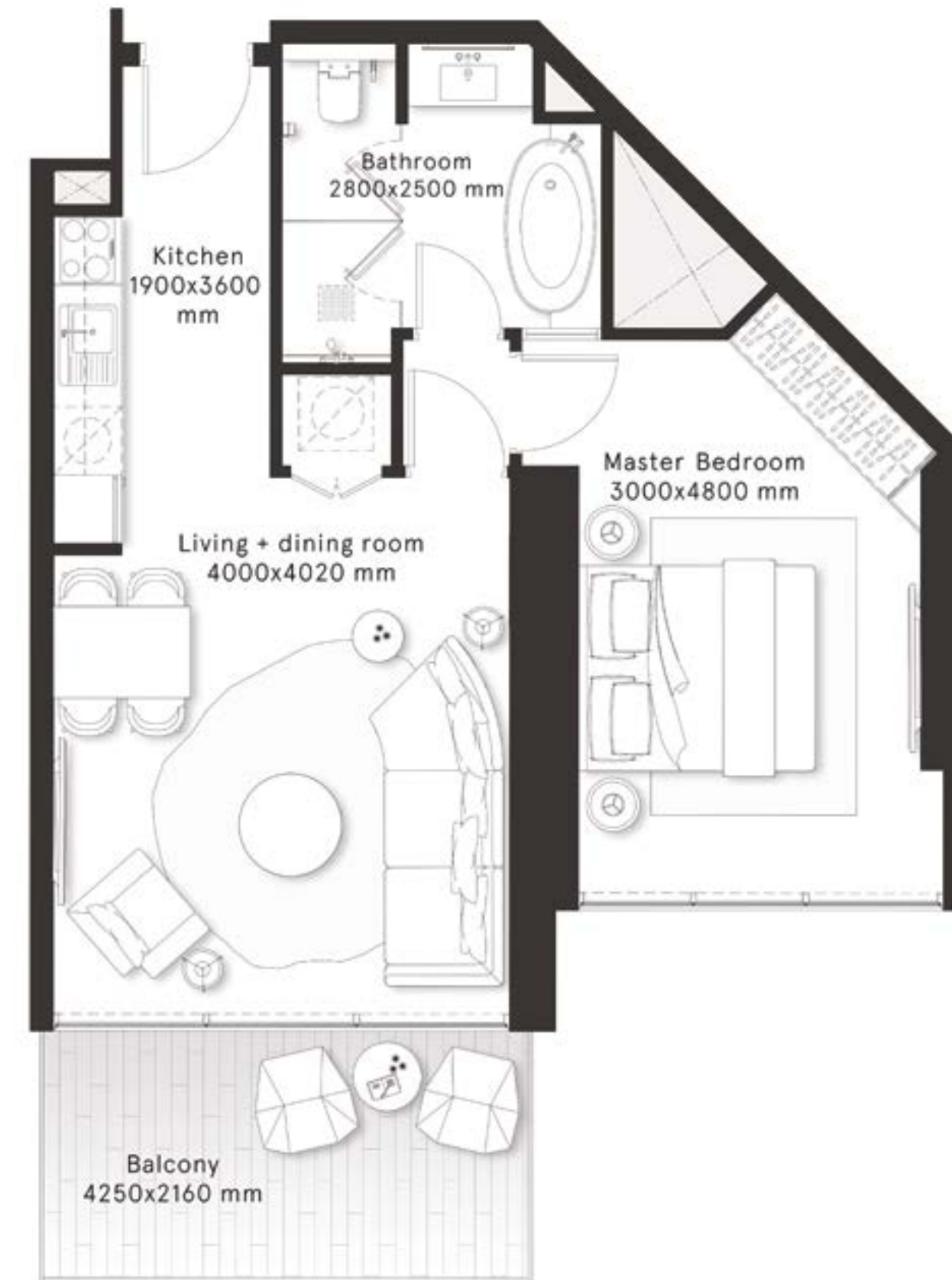
1 Bedroom Type B1

FLOORS
1-46,48

CITY
VIEWS



INTERNAL AREA	609.2 sq ft
BALCONY AREA	101 sq ft
TOTAL AREA	710.2 sq ft

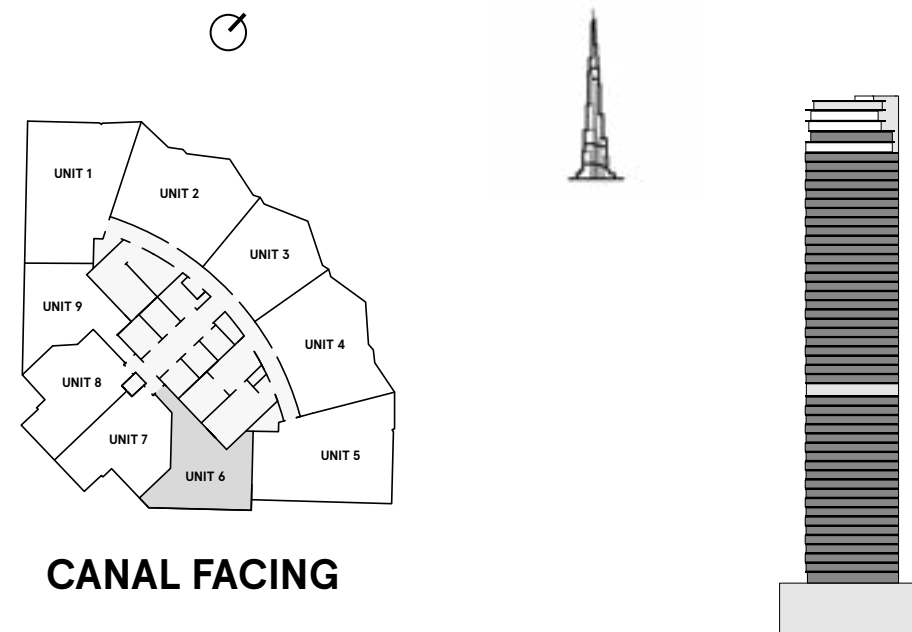


W RESIDENCES DUBAI - DOWNTOWN

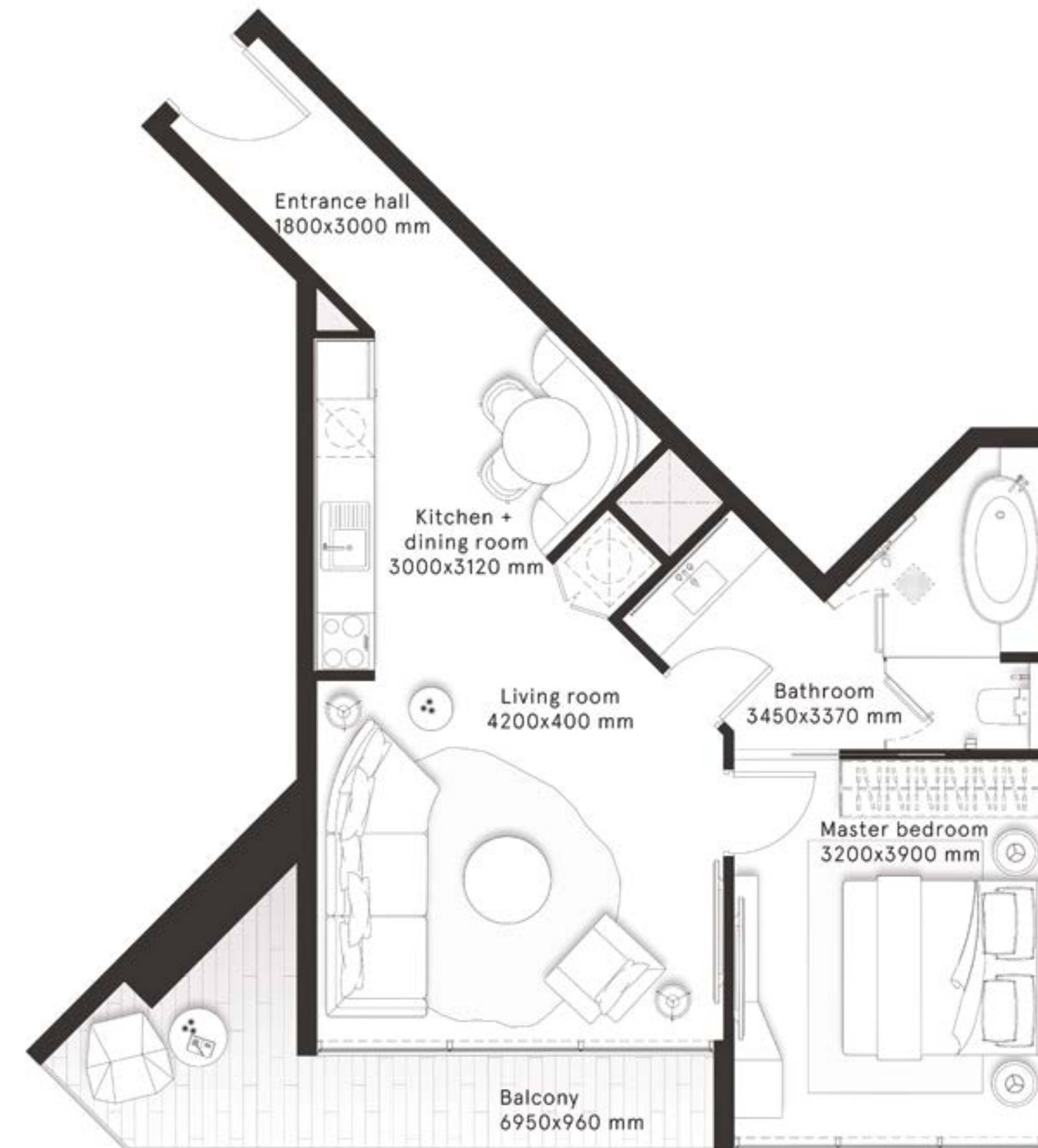
1 Bedroom Type C

FLOORS
1-46,48

CITY
VIEWS



INTERNAL AREA	646.8 sq ft
BALCONY AREA	107 sq ft
TOTAL AREA	753.8 sq ft

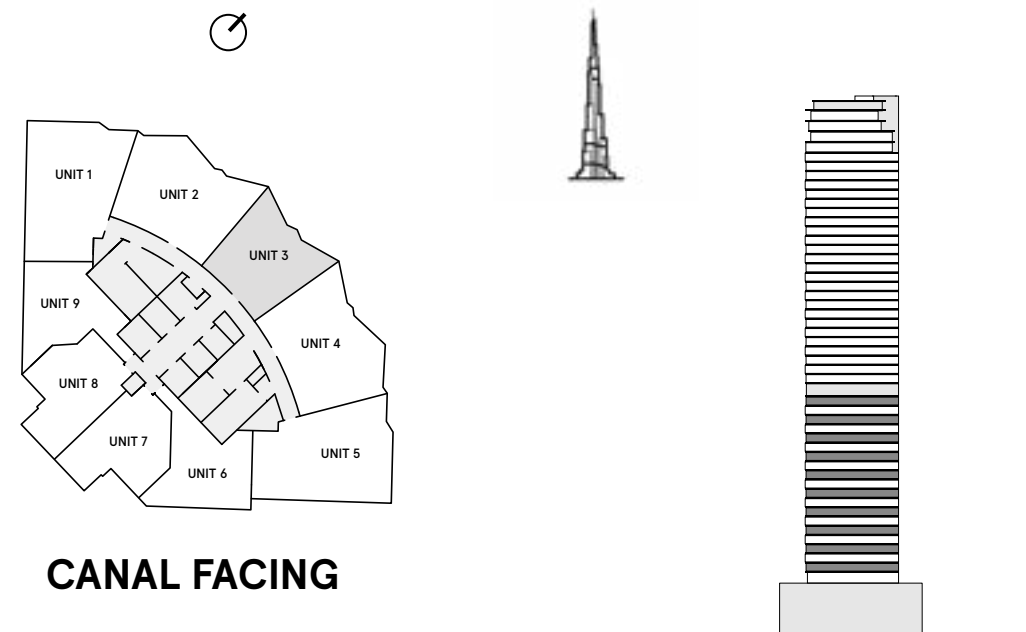


W RESIDENCES DUBAI - DOWNTOWN

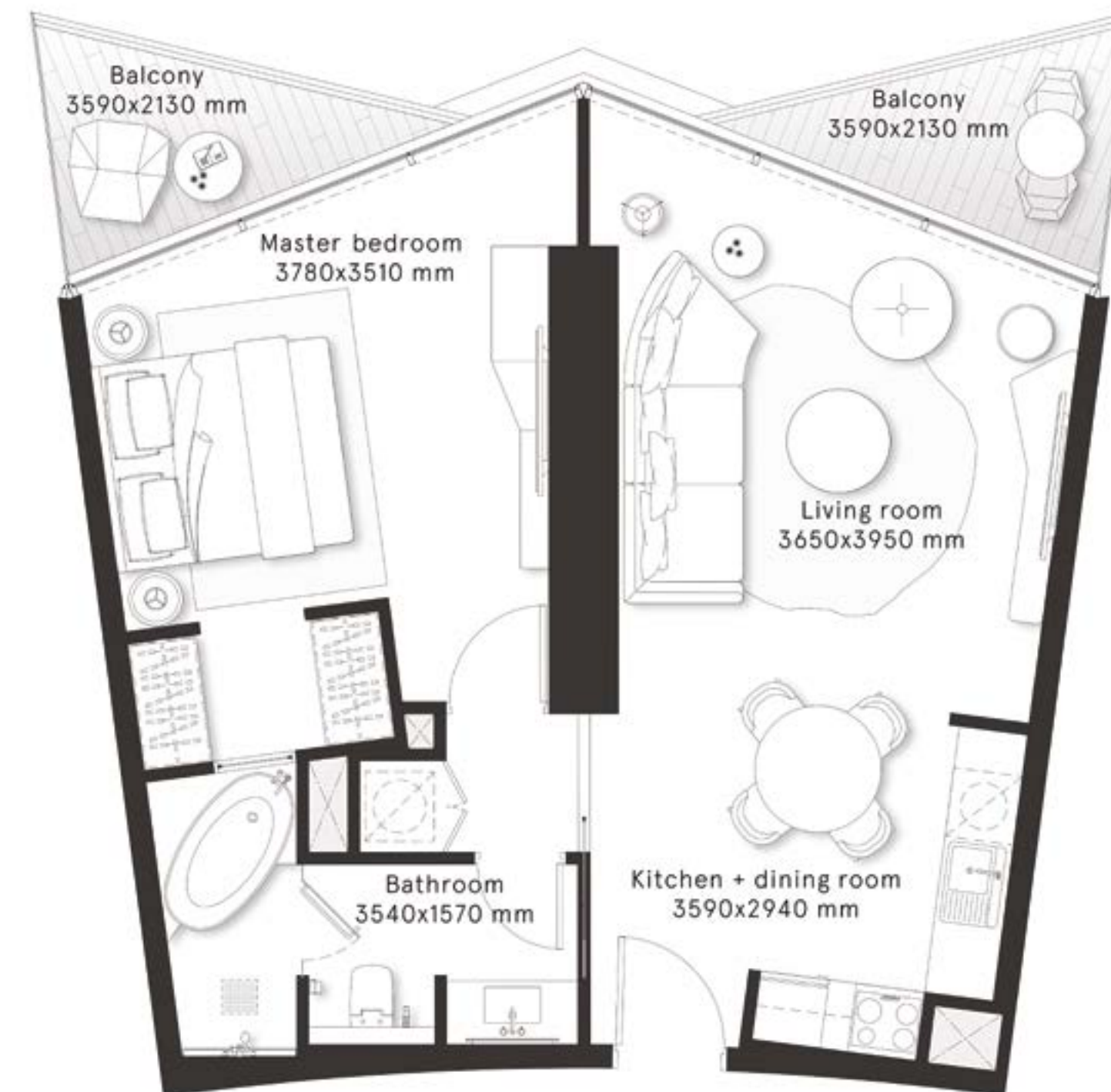
1 Bedroom Type D

FLOORS
2,4,6,8,10,12,14,16,18,20

CITY
VIEWS



INTERNAL AREA	667.8 sq ft
BALCONY AREA	102.15 sq ft
TOTAL AREA	769.95 sq ft

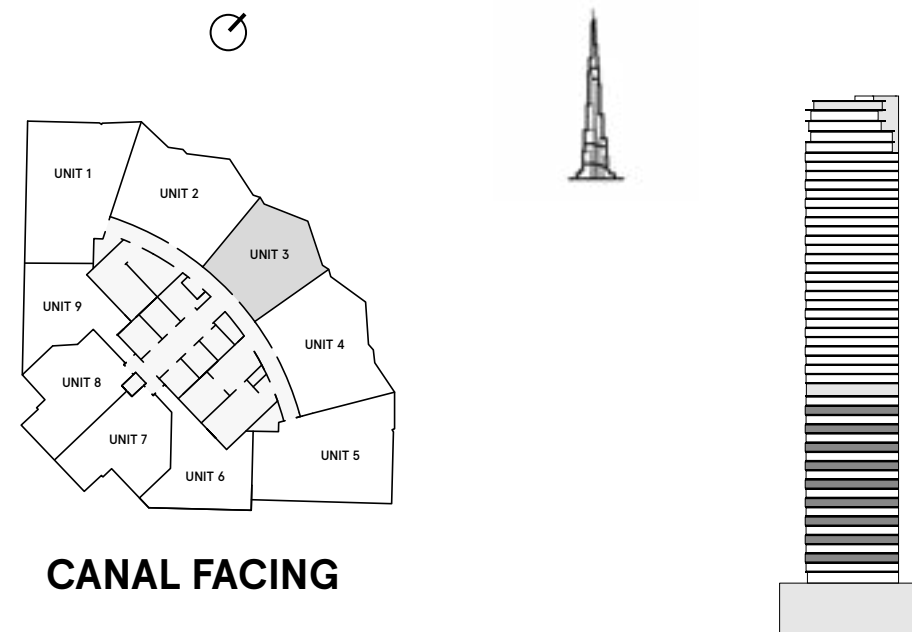


W RESIDENCES DUBAI - DOWNTOWN

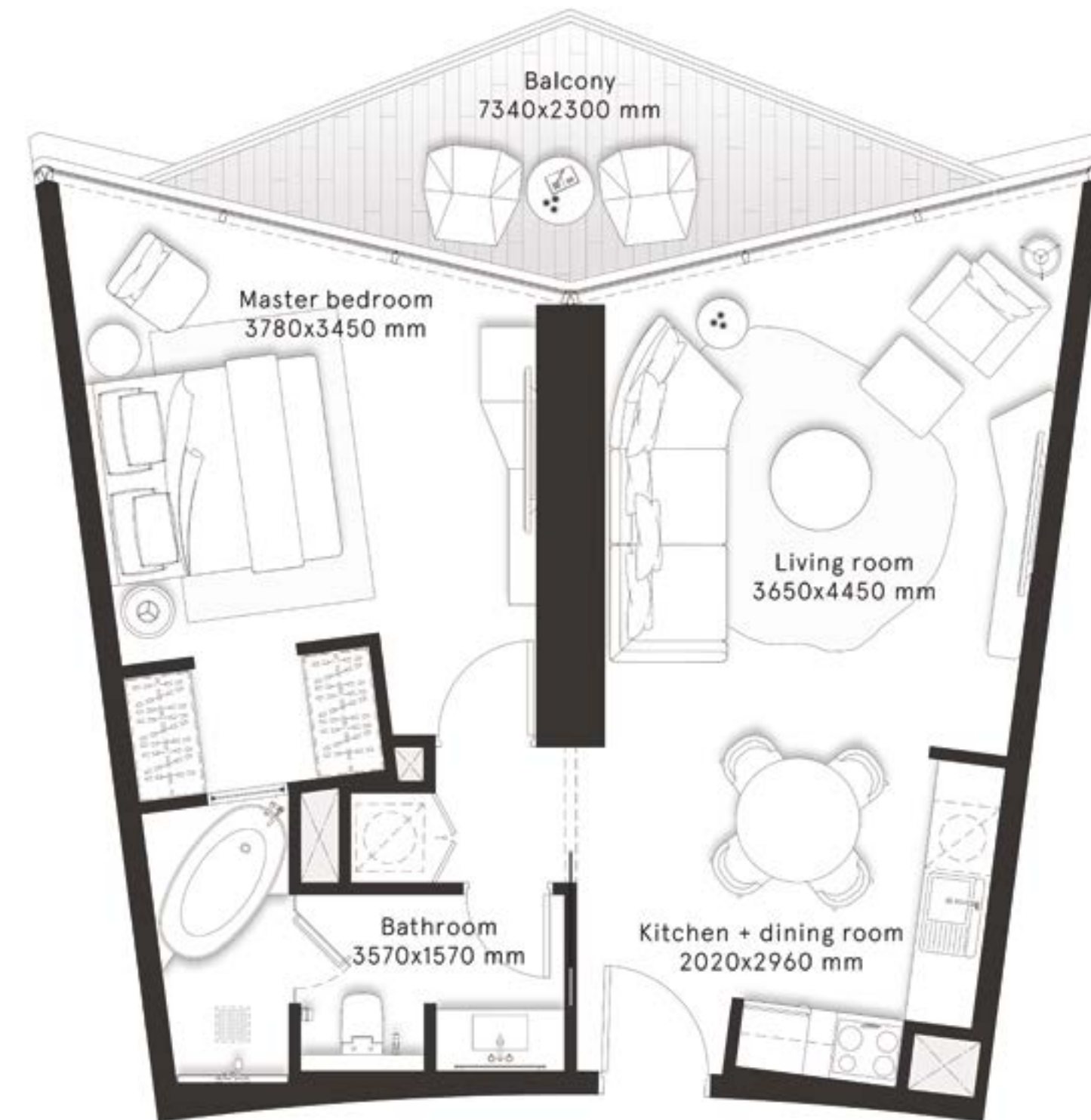
1 Bedroom Type E

FLOORS
3,5,7,9,11,13,15,17,19

CITY
VIEWS



INTERNAL AREA	658.2 sq ft
BALCONY AREA	119.1 sq ft
TOTAL AREA	777.3 sq ft



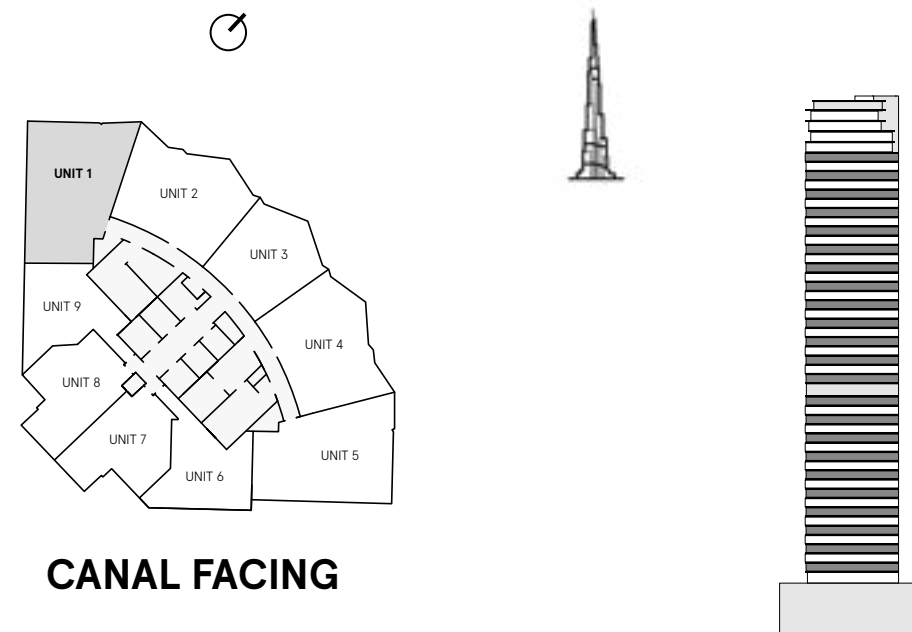
W RESIDENCES DUBAI - DOWNTOWN

2 Bedrooms Type A

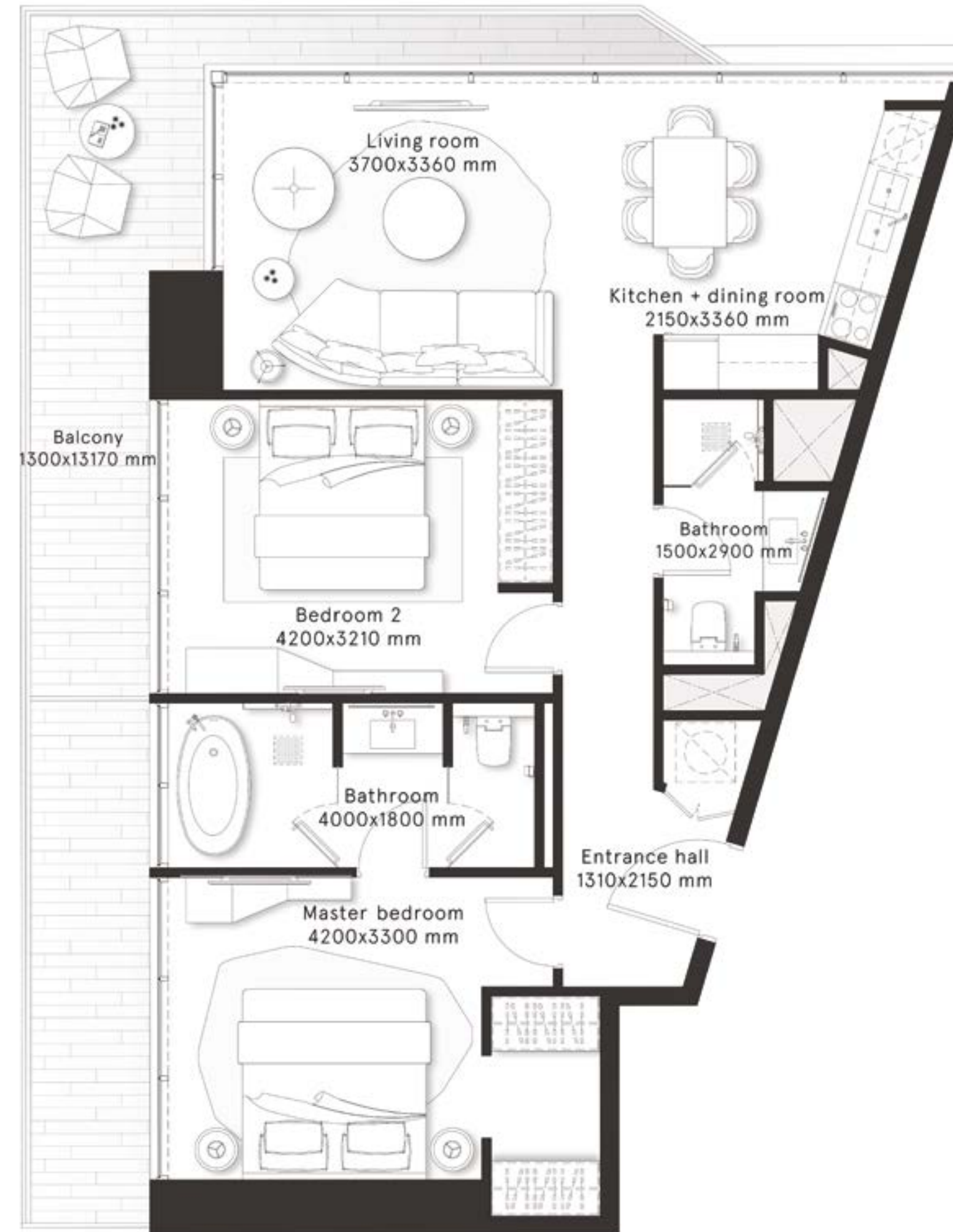
FLOORS

2,4,6,8,10,12,14,16,18,20,22,24,26,
28,30,32,34,36,38,40,42,44,46

CITY VIEWS



INTERNAL AREA	896.8 sq ft
BALCONY AREA	249.6 sq ft
TOTAL AREA	1,146.4 sq ft



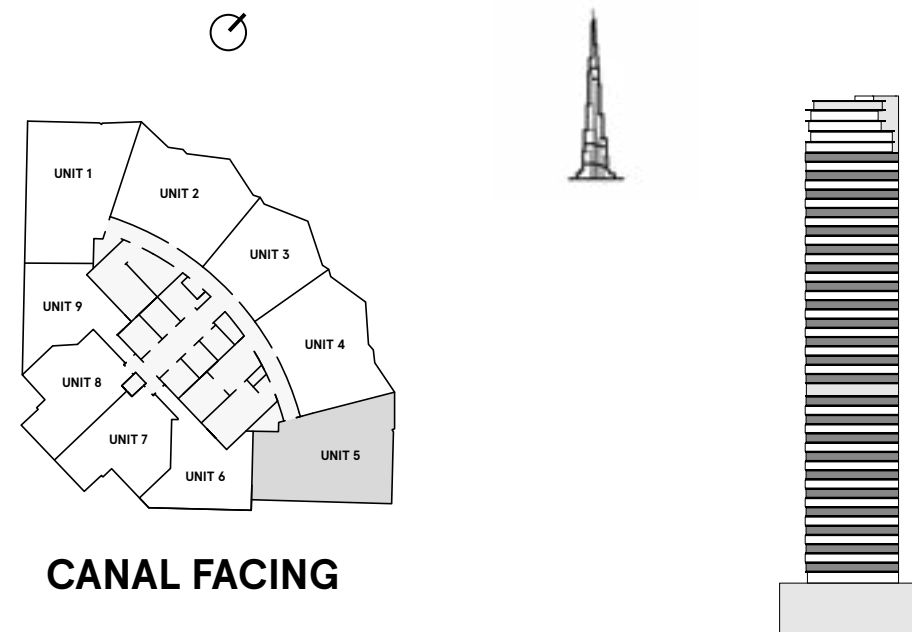
W RESIDENCES DUBAI - DOWNTOWN

2 Bedrooms Type A1

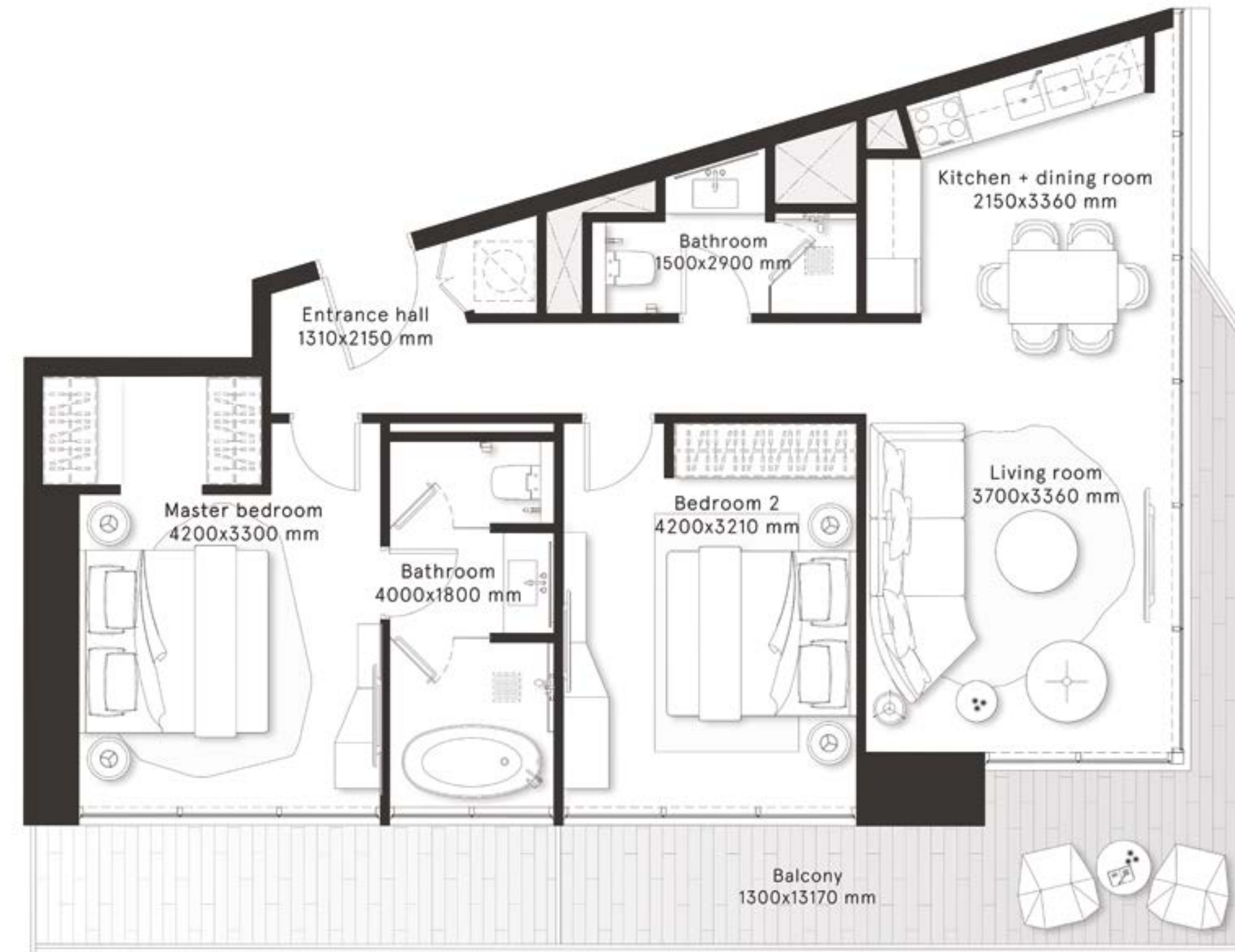
FLOORS

2,4,6,8,10,12,14,16,18,20,22,24,26,
28,30,32,34,36,38,40,42,44,46

CITY VIEWS



INTERNAL AREA	893.8 sq ft
BALCONY AREA	249.9 sq ft
TOTAL AREA	1,143.7 sq ft

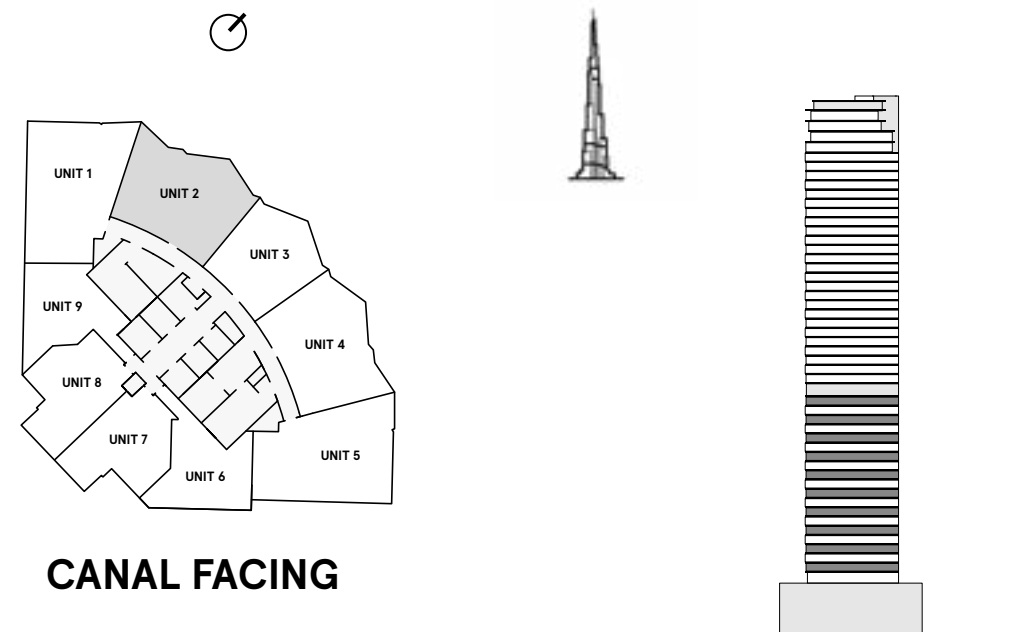


W RESIDENCES DUBAI - DOWNTOWN

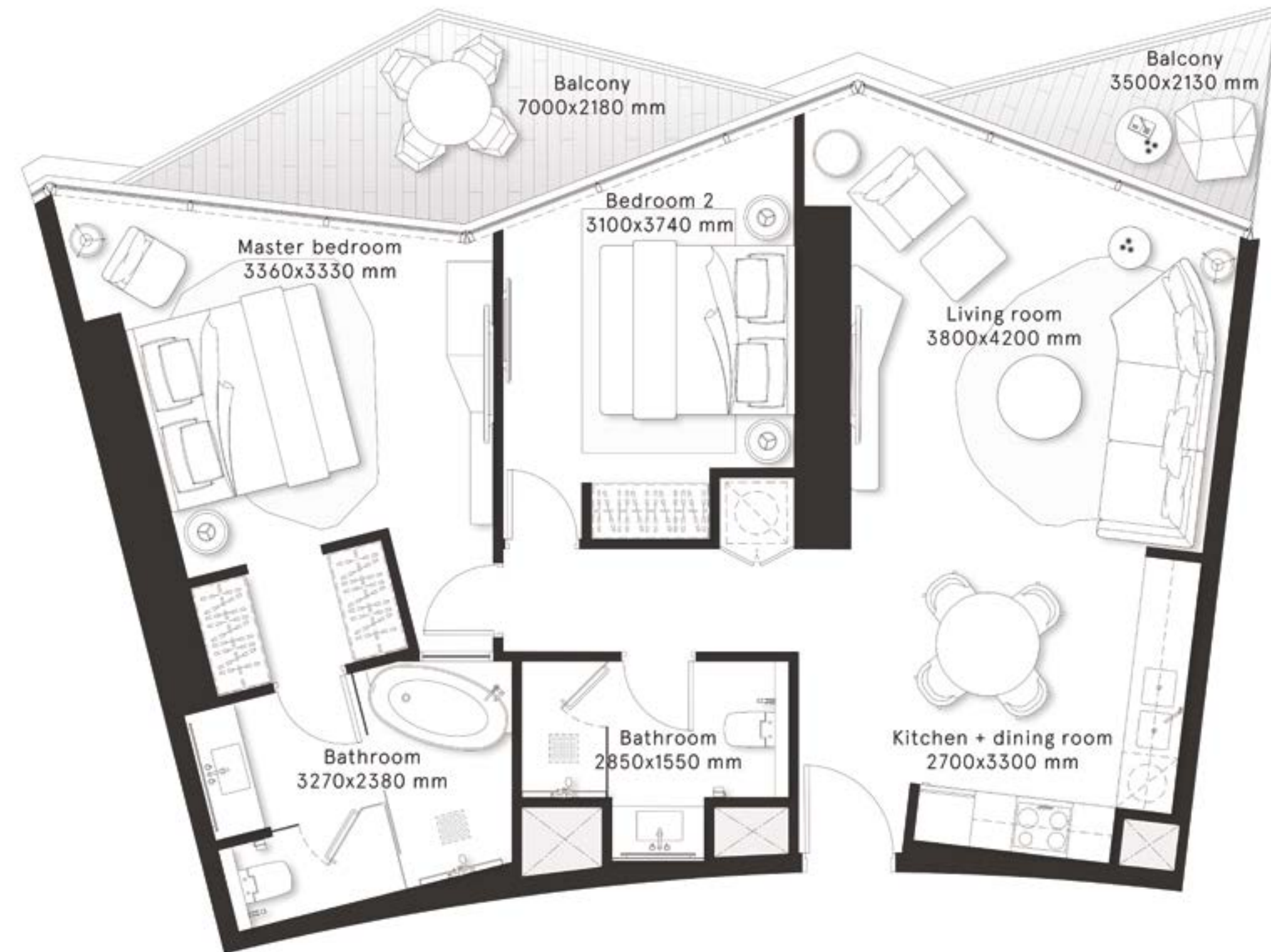
2 Bedrooms Type B

FLOORS
2,4,6,8,10,12,14,16,18,20

CITY
VIEWS



INTERNAL AREA	925.1 sq ft
BALCONY AREA	153.3 sq ft
TOTAL AREA	1,078.4 sq ft

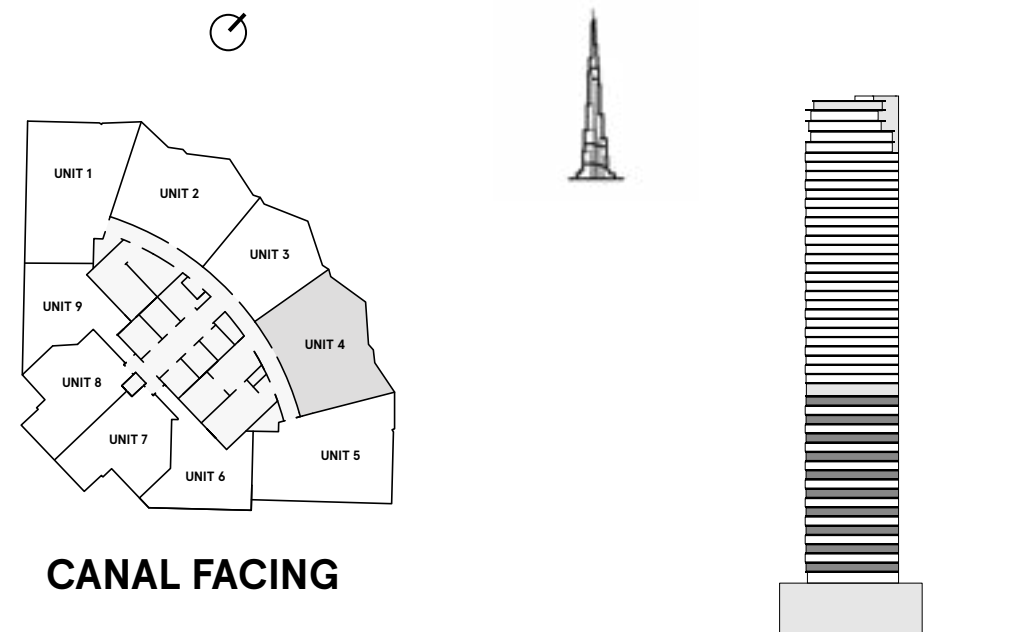


W RESIDENCES DUBAI - DOWNTOWN

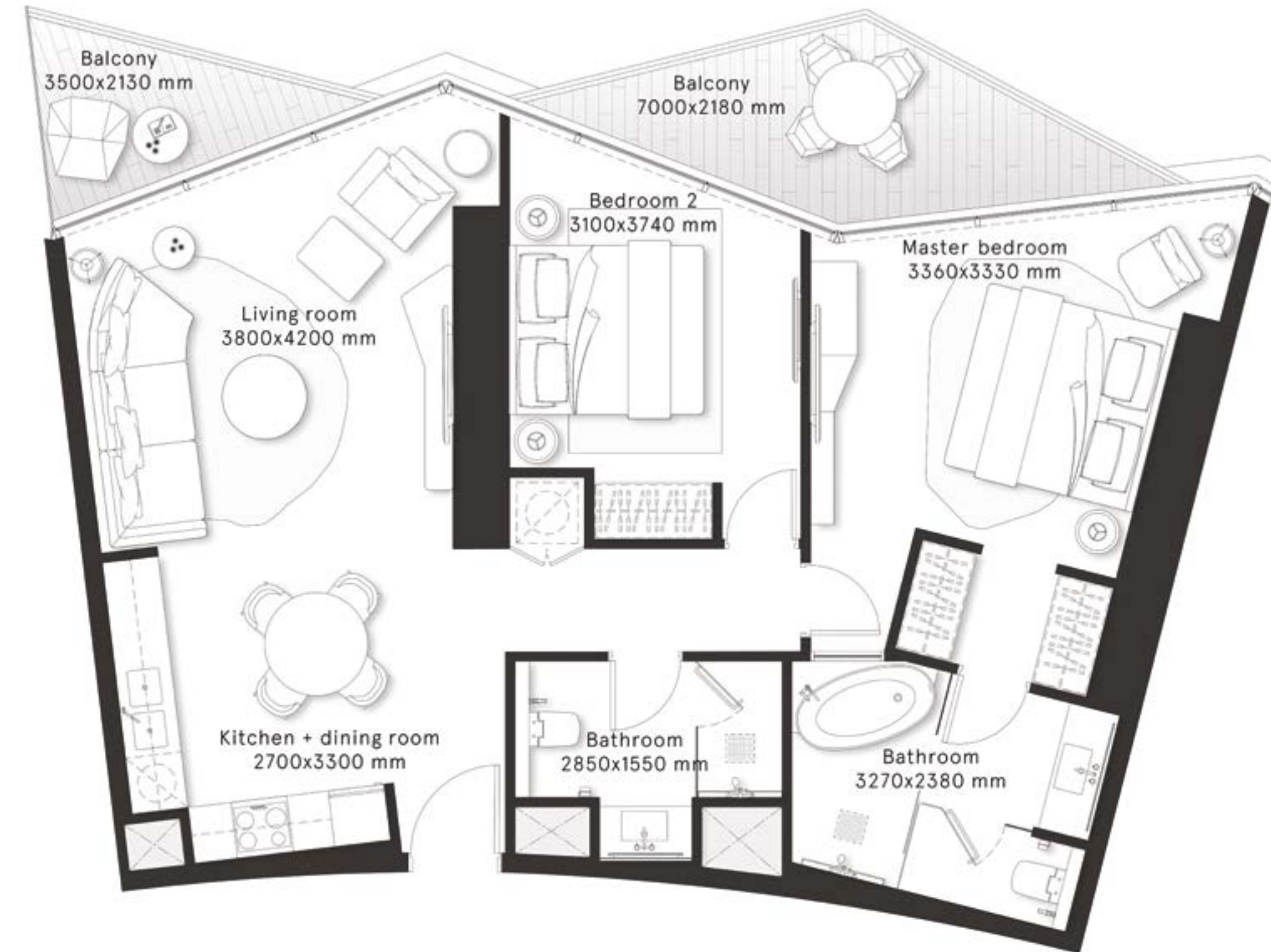
2 Bedrooms Type B1

FLOORS
2,4,6,8,10,12,14,16,18,20

CITY
VIEWS



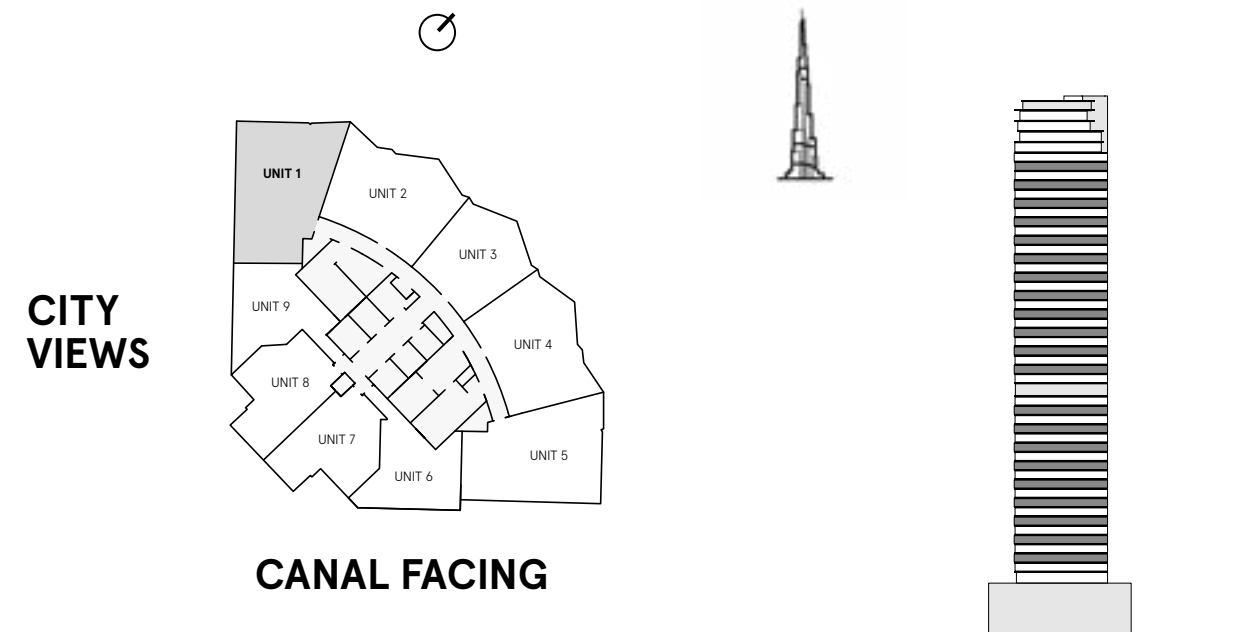
INTERNAL AREA	925.8 sq ft
BALCONY AREA	153.2 sq ft
TOTAL AREA	1,079 sq ft



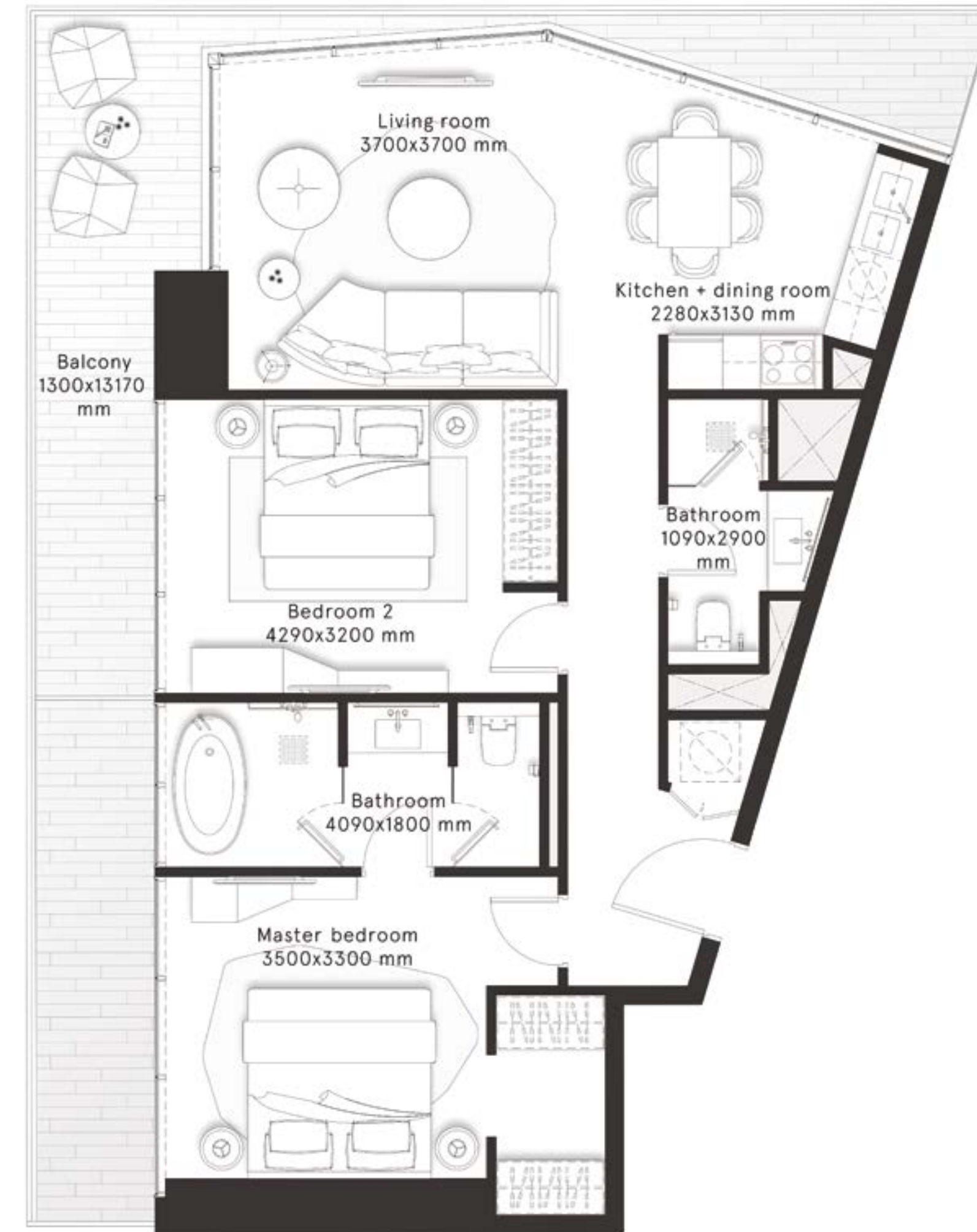
W RESIDENCES DUBAI - DOWNTOWN

2 Bedrooms Type C

FLOORS
3,5,7,9,11,13,15,17,19,23,25,27,
29,31,33,35,37,39,41,43,45



INTERNAL AREA	892.1 sq ft
BALCONY AREA	283.9 sq ft
TOTAL AREA	1,176 sq ft

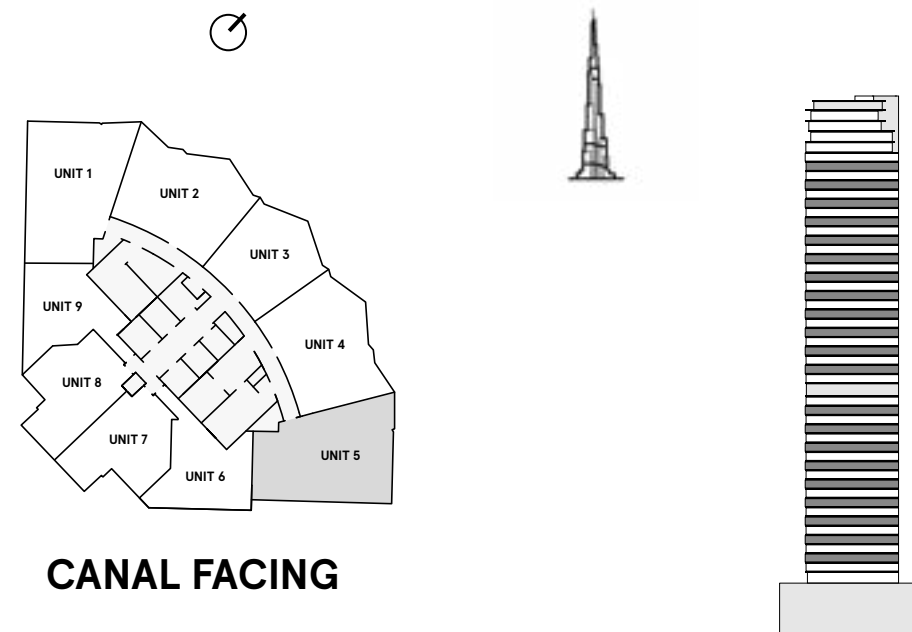


W RESIDENCES DUBAI - DOWNTOWN

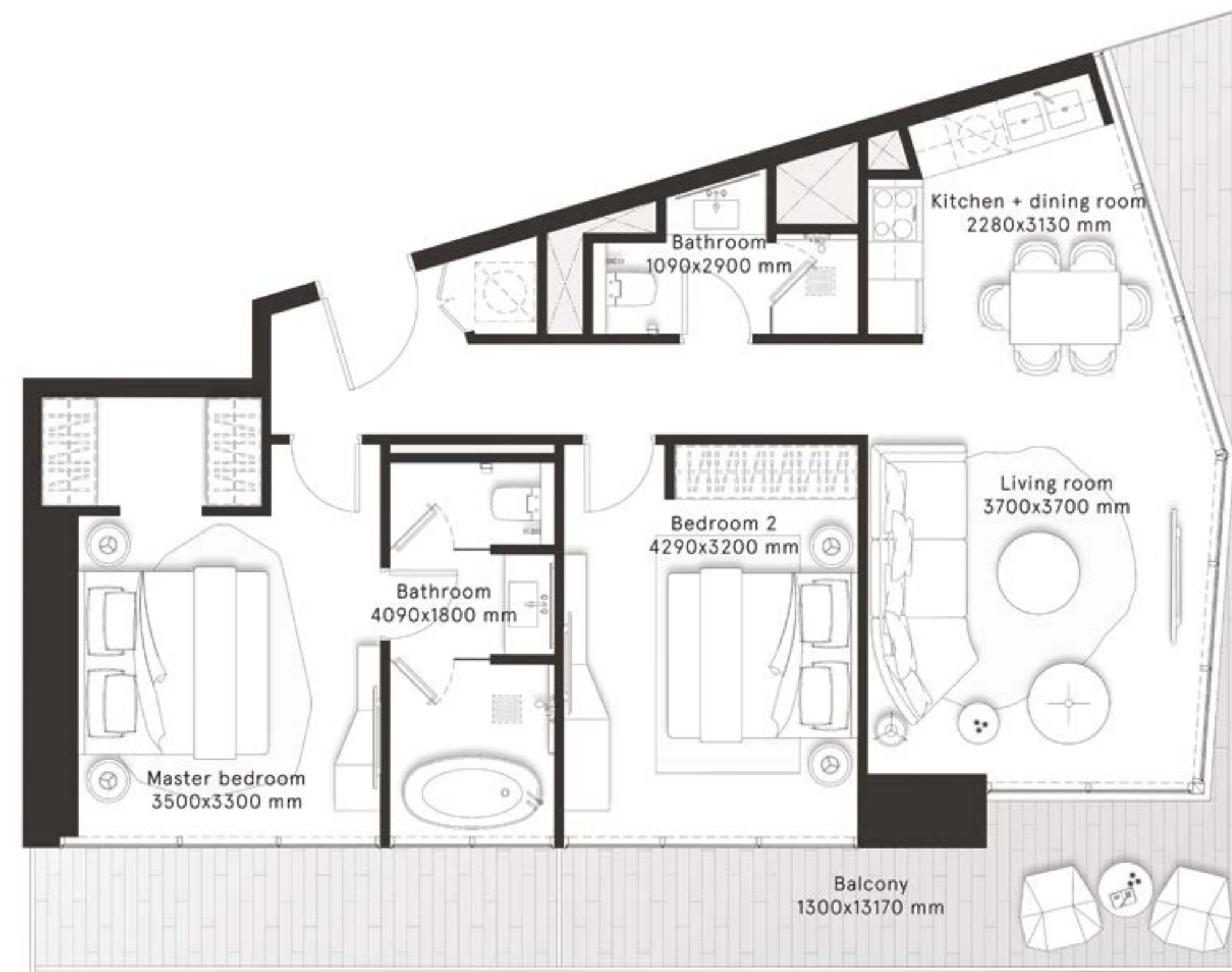
2 Bedrooms Type C1

FLOORS
3,5,7,9,11,13,15,17,19,23,25,27,
29,31,33,35,37,39,41,43,45

CITY
VIEWS



INTERNAL AREA	894 sq ft
BALCONY AREA	273.4 sq ft
TOTAL AREA	1,167.4 sq ft

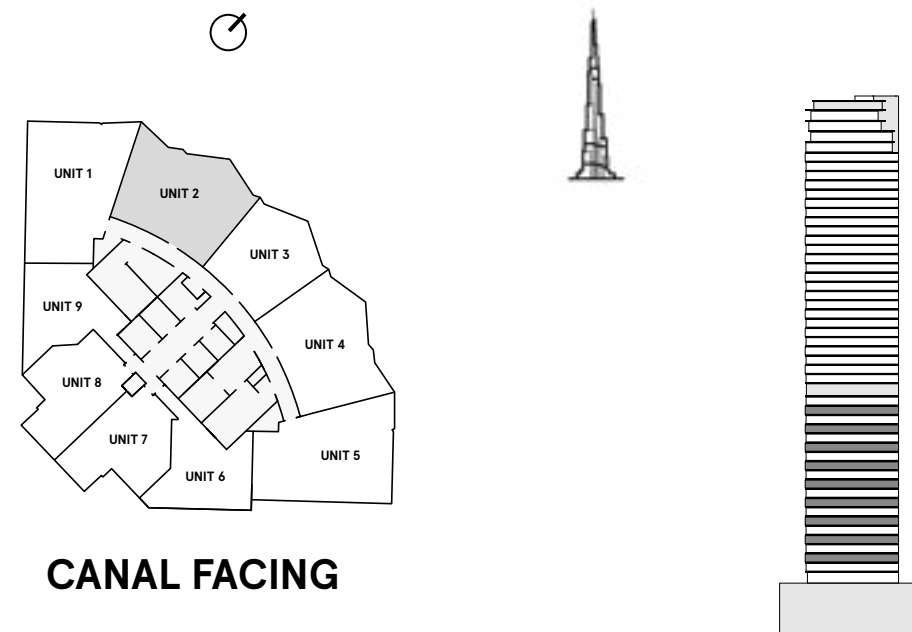


W RESIDENCES DUBAI - DOWNTOWN

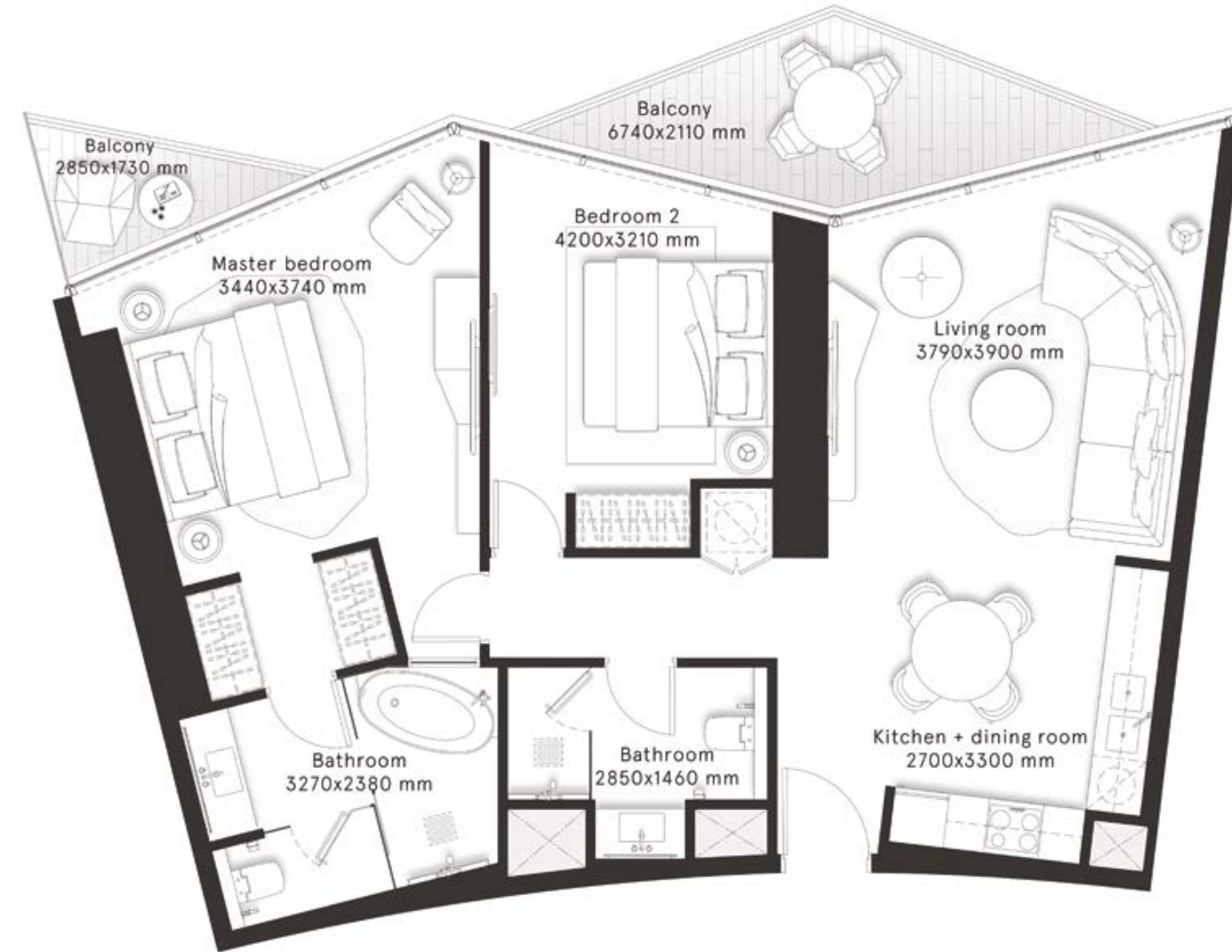
2 Bedrooms Type D

FLOORS
3,5,7,9,11,13,15,17,19

CITY
VIEWS



INTERNAL AREA	927 sq ft
BALCONY AREA	135.5 sq ft
TOTAL AREA	1,062.5 sq ft

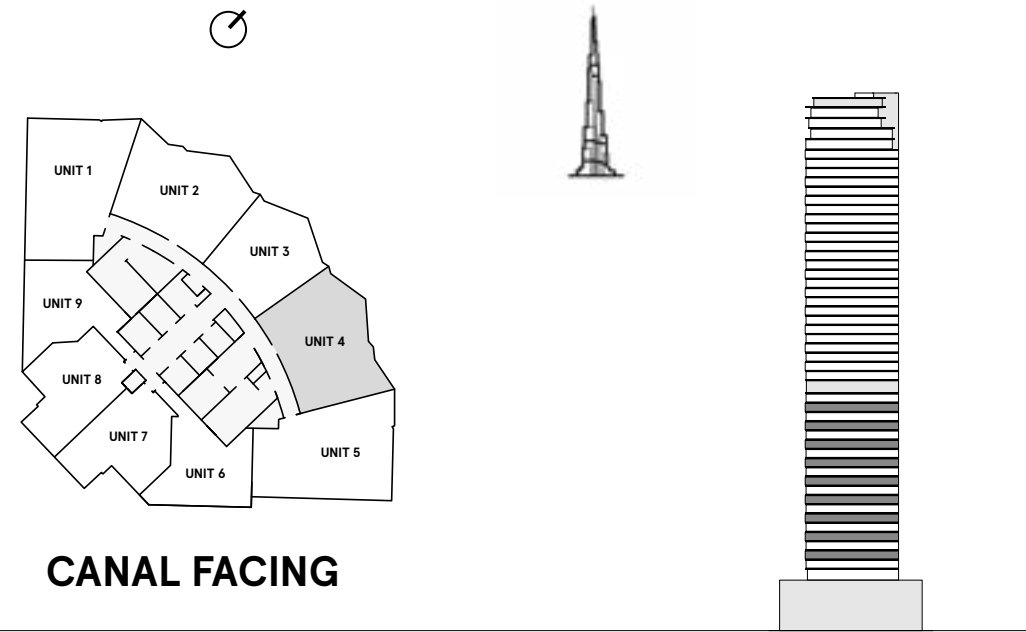


W RESIDENCES DUBAI - DOWNTOWN

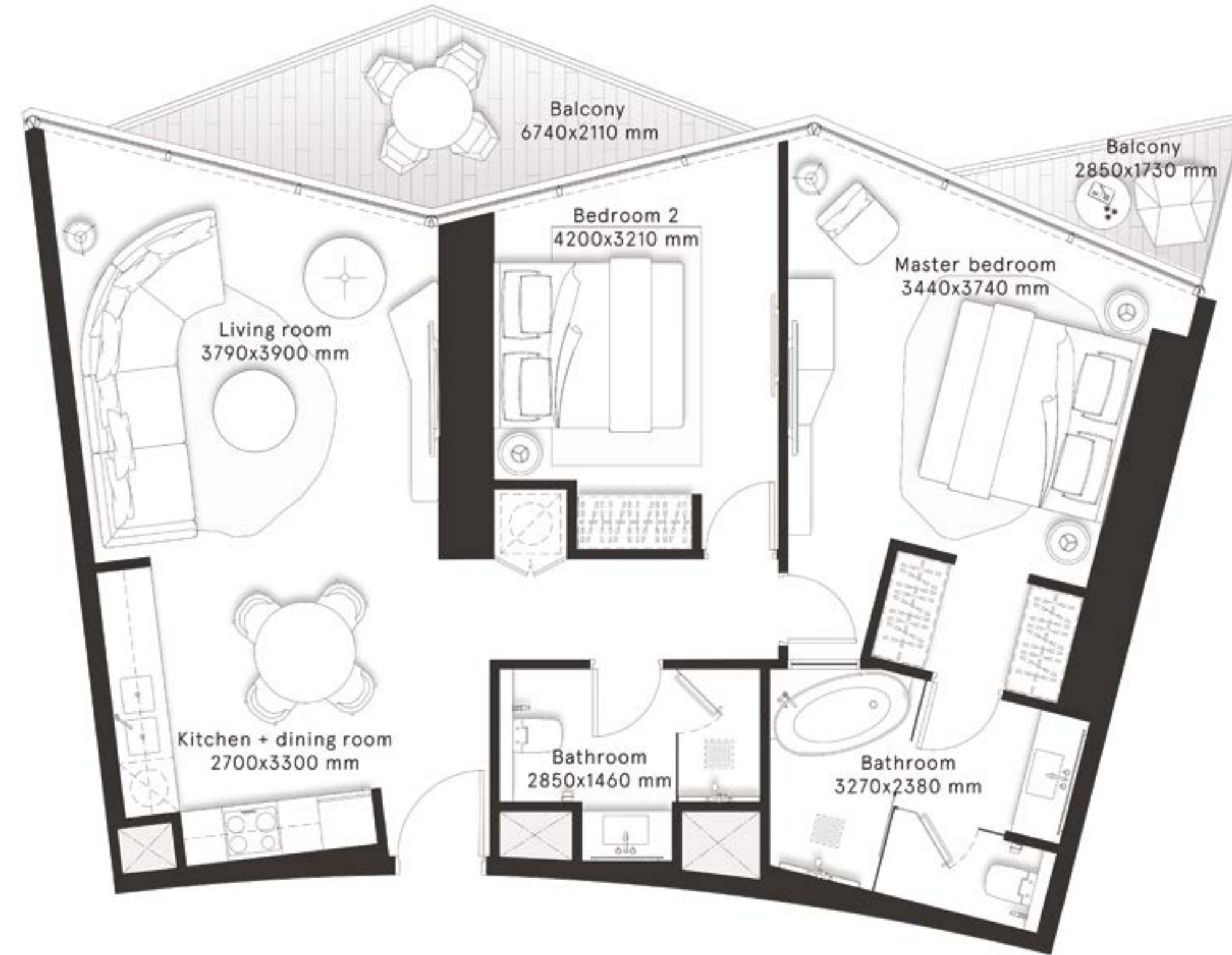
**2 Bedrooms
Type D1**

FLOORS
3,5,7,9,11,13,15,17,19

CITY
VIEWS



INTERNAL AREA	933.7 sq ft
BALCONY AREA	128.3 sq ft
TOTAL AREA	1,062 sq ft

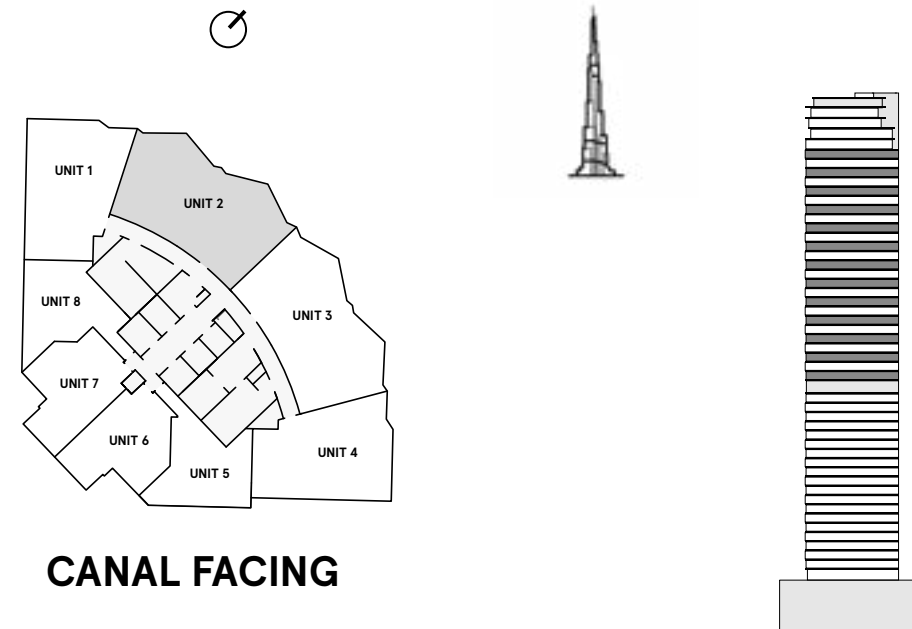


W RESIDENCES DUBAI - DOWNTOWN

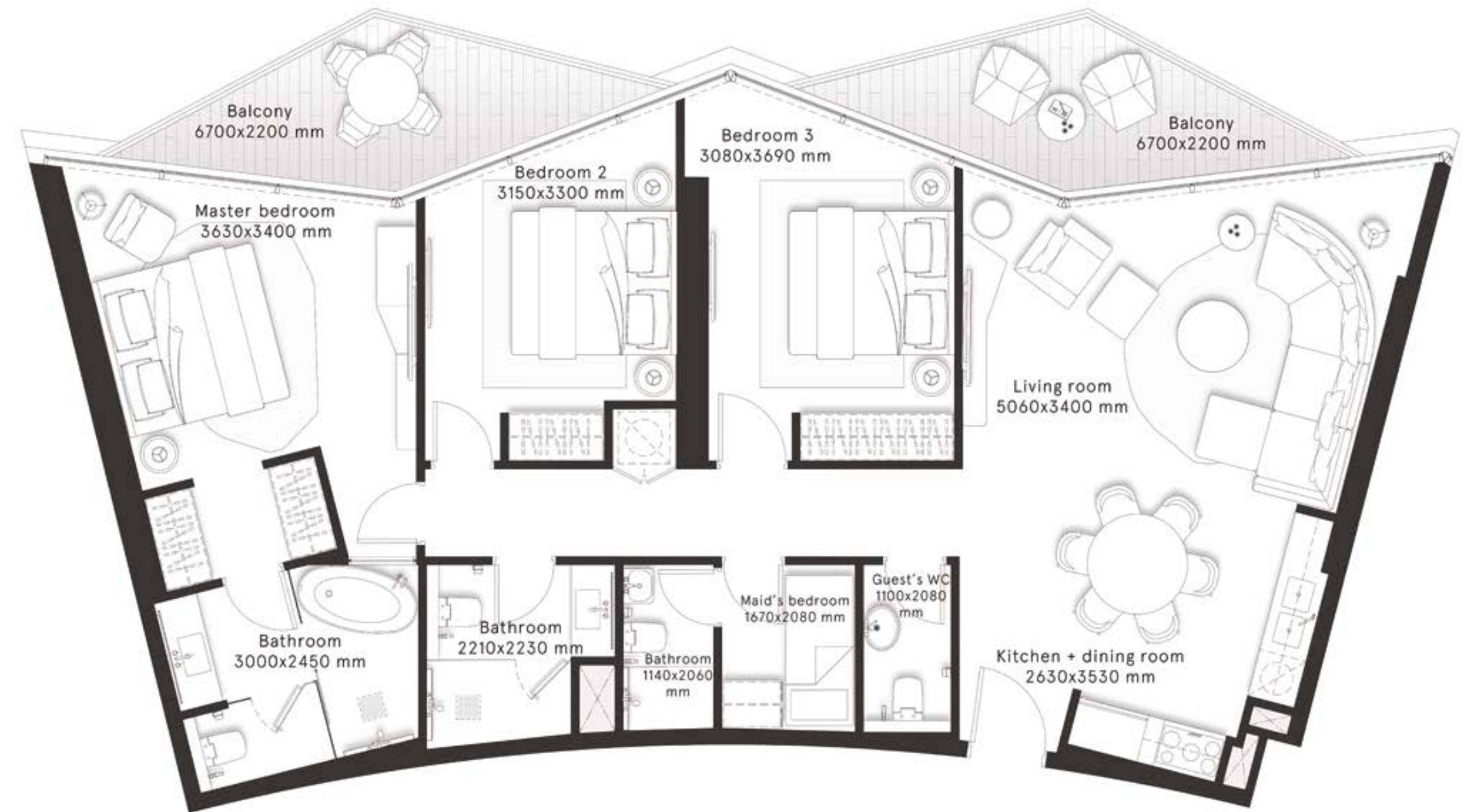
3 Bedrooms Type A

FLOORS
22,24,26,28,30,32,34,
36,38,40,42,44,46

CITY
VIEWS



INTERNAL AREA	1,268.5 sq ft
BALCONY AREA	204.3 sq ft
TOTAL AREA	1,472.8 sq ft

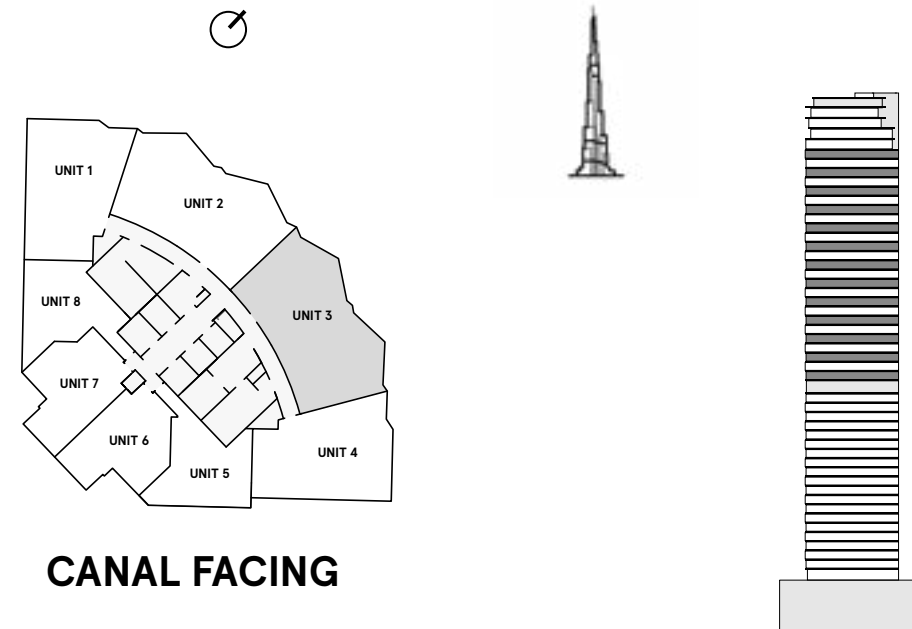


W RESIDENCES DUBAI - DOWNTOWN

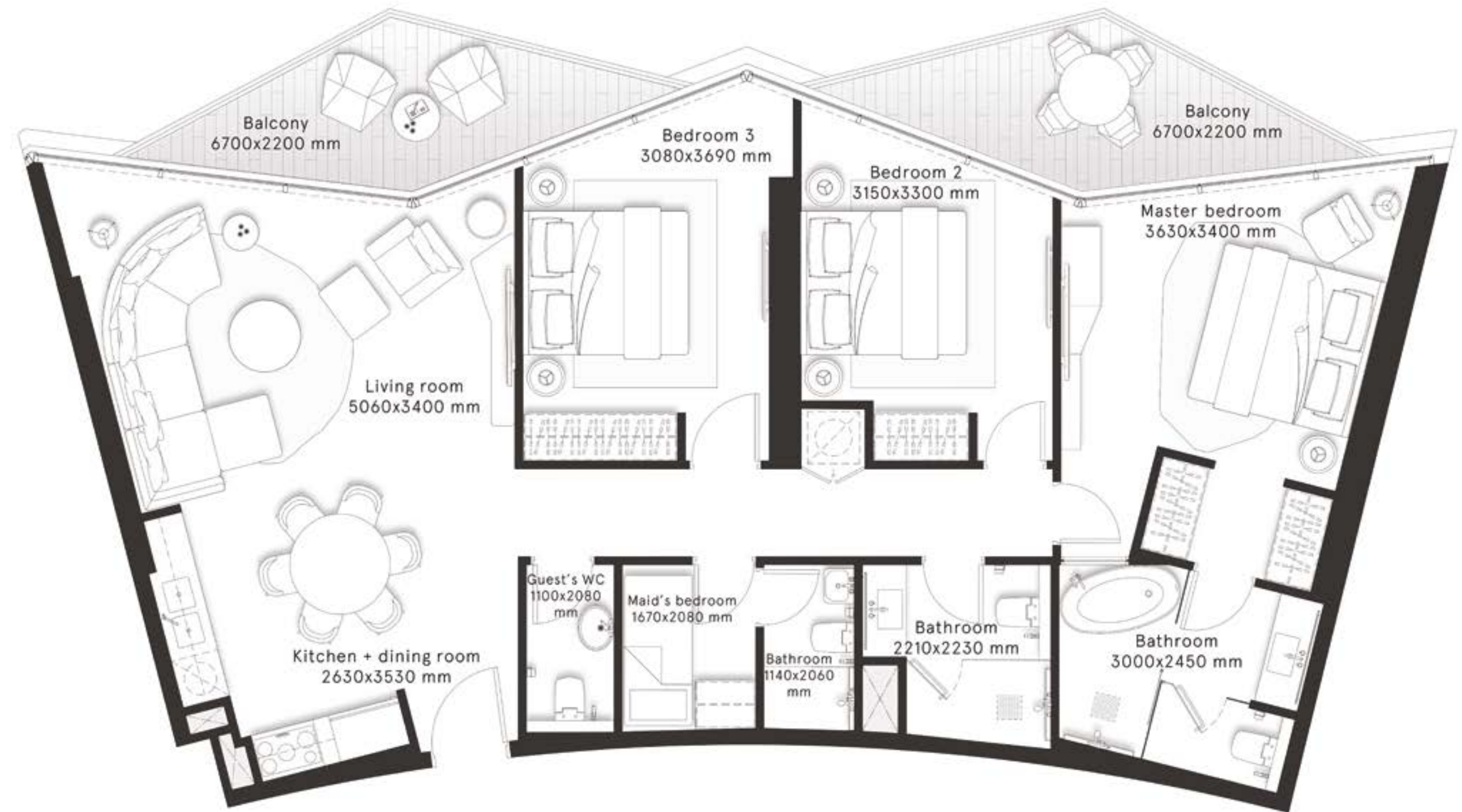
3 Bedrooms Type A1

FLOORS
22,24,26,28,30,32,34,
36,38,40,42,44,46

CITY
VIEWS



INTERNAL AREA	1,266.9 sq ft
BALCONY AREA	204.3 sq ft
TOTAL AREA	1,471.2 sq ft

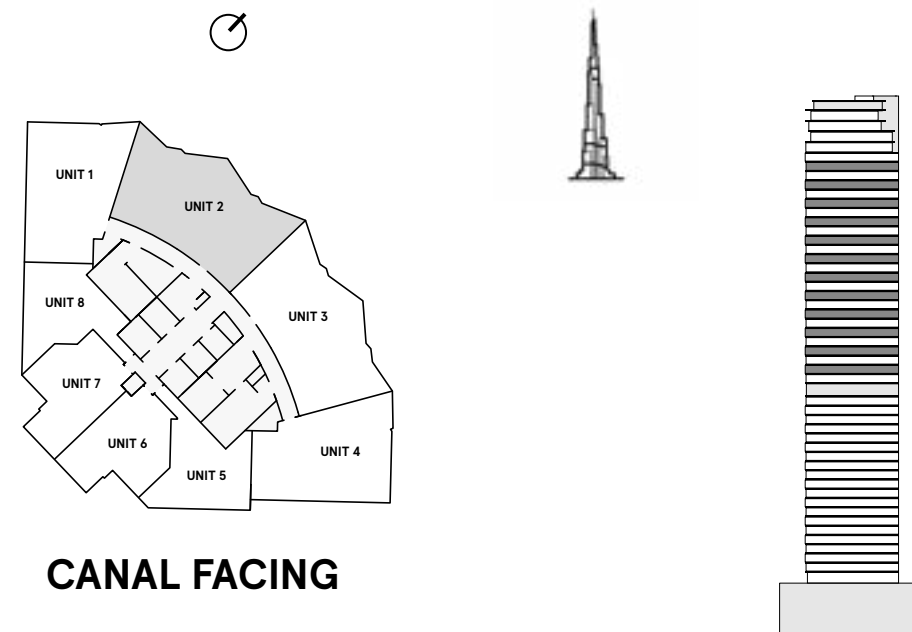


W RESIDENCES DUBAI - DOWNTOWN

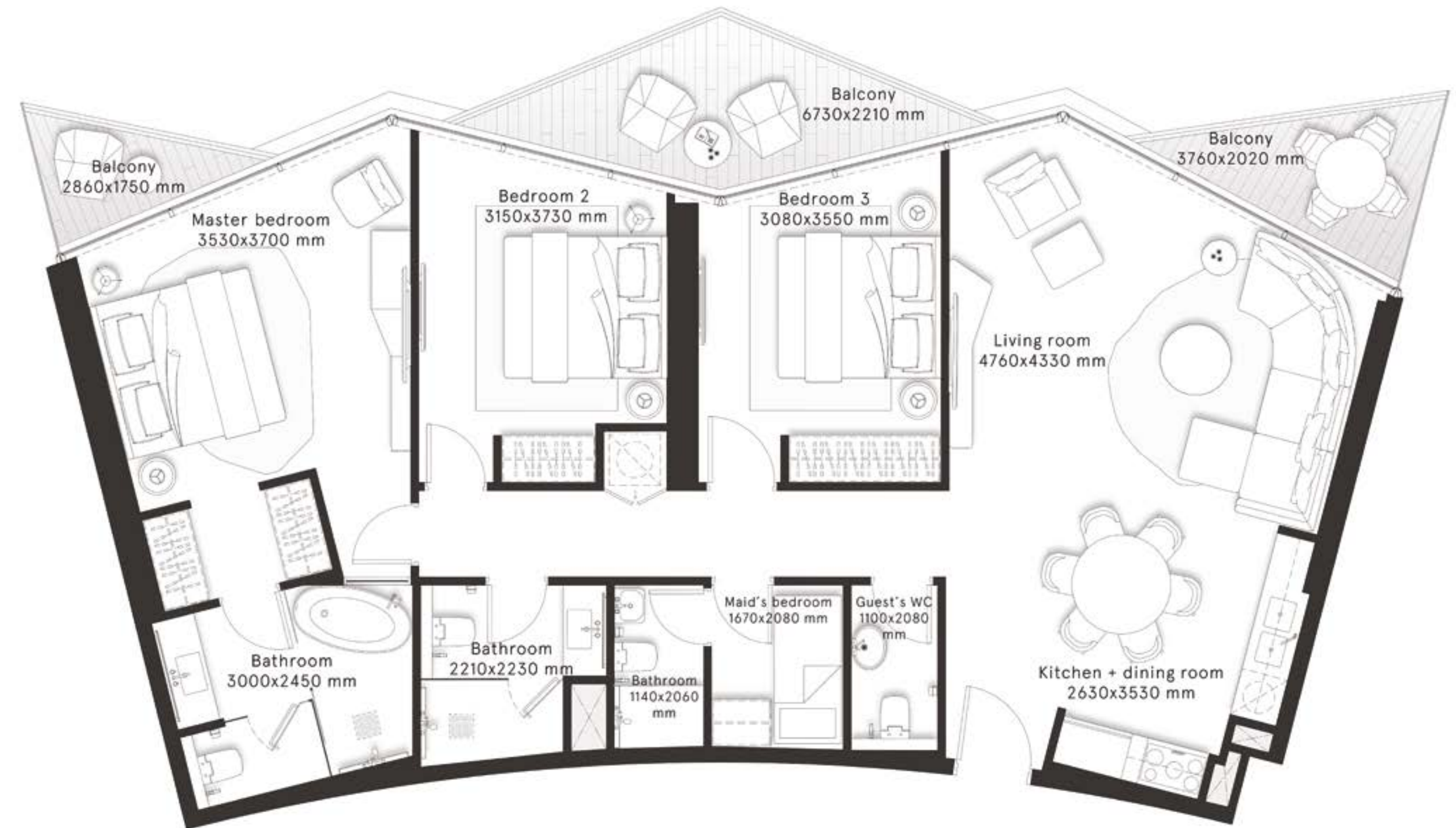
3 Bedrooms Type B

FLOORS
23,25,27,29,31,33,
35,37,39,41,43,45

CITY
VIEWS



INTERNAL AREA	1,268 sq ft
BALCONY AREA	195 sq ft
TOTAL AREA	1,463 sq ft

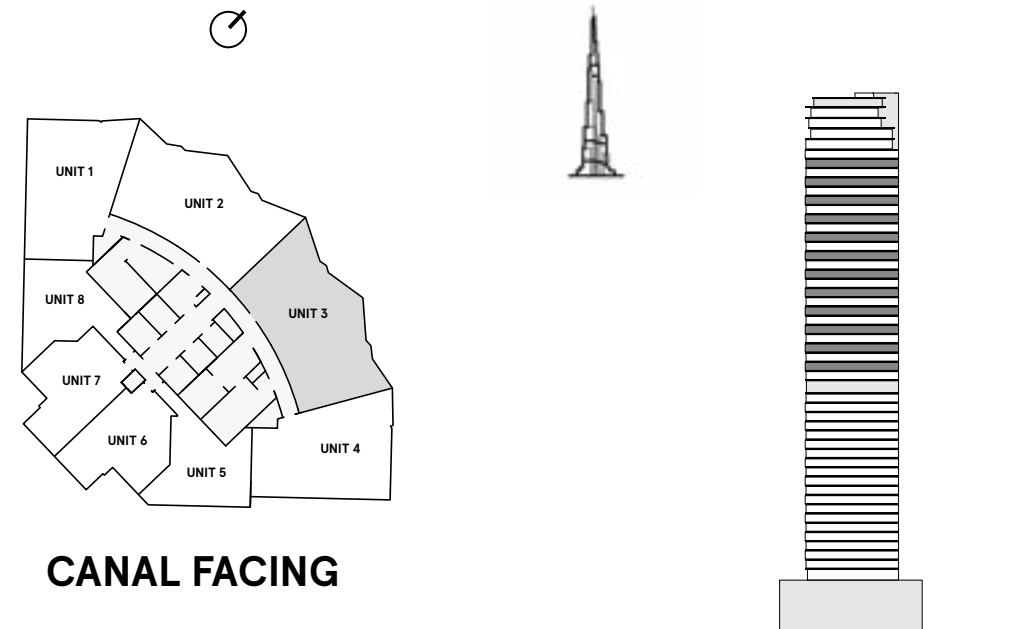


W RESIDENCES DUBAI - DOWNTOWN

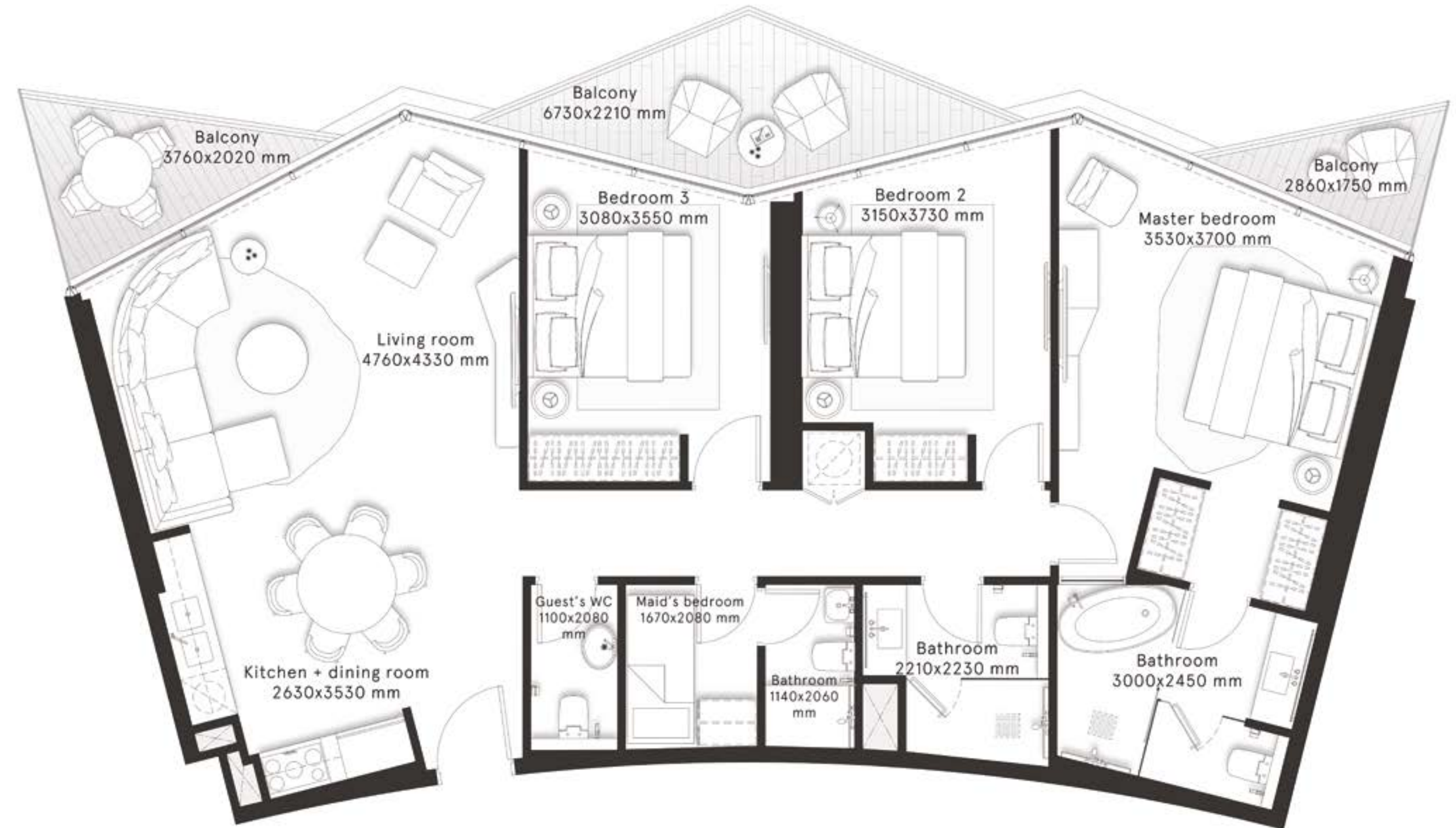
3 Bedrooms Type B1

FLOORS
23,25,27,29,31,33,
35,37,39,41,43,45

CITY
VIEWS



INTERNAL AREA	1,271.2 sq ft
BALCONY AREA	187.8 sq ft
TOTAL AREA	1,459 sq ft



DAR AL ARKAN

RIYADH, KSA

12622 Makkah Road, Al Wizarat, Beside Riyadh Marriott Hotel

BEIJING, CHINA

303-309, North Tower, Beijing Kerry Centre, No.1 Guanghua Road, Chaoyang District, Beijing +86 132 5888 6222

LONDON, UK

50 Hans Crescent, Knightsbridge, London, SW1X ONA

UAE

Dubai
Conrad Dubai, Sheikh Zayed Road, Opposite World Trade Centre, PO Box 2523, Dubai

MARBELLA, SPAIN

Marbella's Golden Mile at Marbella Club Hotel

SARAJEVO, BiH

Ul. Fra Andela, Zvizdovica Br. 1, D-mezanin, 71 000

RIYADH, KSA

Shams Ar Riyadh, 13913 Salbukh Road

MEDINA, KSA

Prince Sultan Road – Al Hijra, Al Madinah Al Munawarah, Medina.

RIYADH, KSA

Al Aflaj, As Suwaidi, 12796, Riyadh

JEDDAH, KSA

Ash Shati, 23613, King Abdulaziz Road, Jeddah

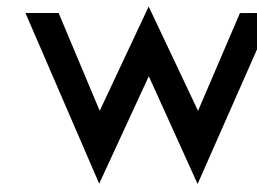
For more information on "W Residences Dubai - Downtown" please call [+971 800 40404](tel:+97180040404) (UAE) or [800 123 3333](tel:8001233333) (KSA)

You can visit our website at daralarkan.com

or email us at info@alarkan.com or via our social media platforms

DarAlArkanOfficial /  | [daralarkanGLBL](https://www.daralarkan.com) /  | [daralarkan](https://www.daralarkan.com) /  | [daralarkanproperties](https://www.daralarkan.com) / 

DAR AL ARKAN



DUBAI

DOWNTOWN

THE RESIDENCES

W Residences Dubai – Downtown are not owned, developed or sold by Marriott International, Inc. or its affiliates (“Marriott”).
Dar Al Arkan Properties LLC and Uranus General Contracting Company use W marks under a license from Marriott, which has not confirmed the accuracy of any of the statements or representations made herein.