




# THE QUAYSIDE

BY ELLINGTON

PROJECT BRIEF

A photograph taken from the deck of a boat, looking out over a body of water towards a city skyline. The foreground shows the boat's railing and a white structure. The background features a hazy cityscape with several tall buildings under a soft, blue sky. The text is overlaid in the upper right quadrant.

A TRANQUIL OASIS  
AMIDST THE URBAN  
PULSE OF DUBAI

## DRIVING DISTANCES

05  
**MINUTES**  
Business Bay Metro Station

11  
**MINUTES**  
Dubai Mall / Burj Khalifa

12  
**MINUTES**  
Museum of the Future

14  
**MINUTES**  
City Walk

15  
**MINUTES**  
Meydan Golf Course

16  
**MINUTES**  
Dubai International Financial Centre

16  
**MINUTES**  
Mall of the Emirates

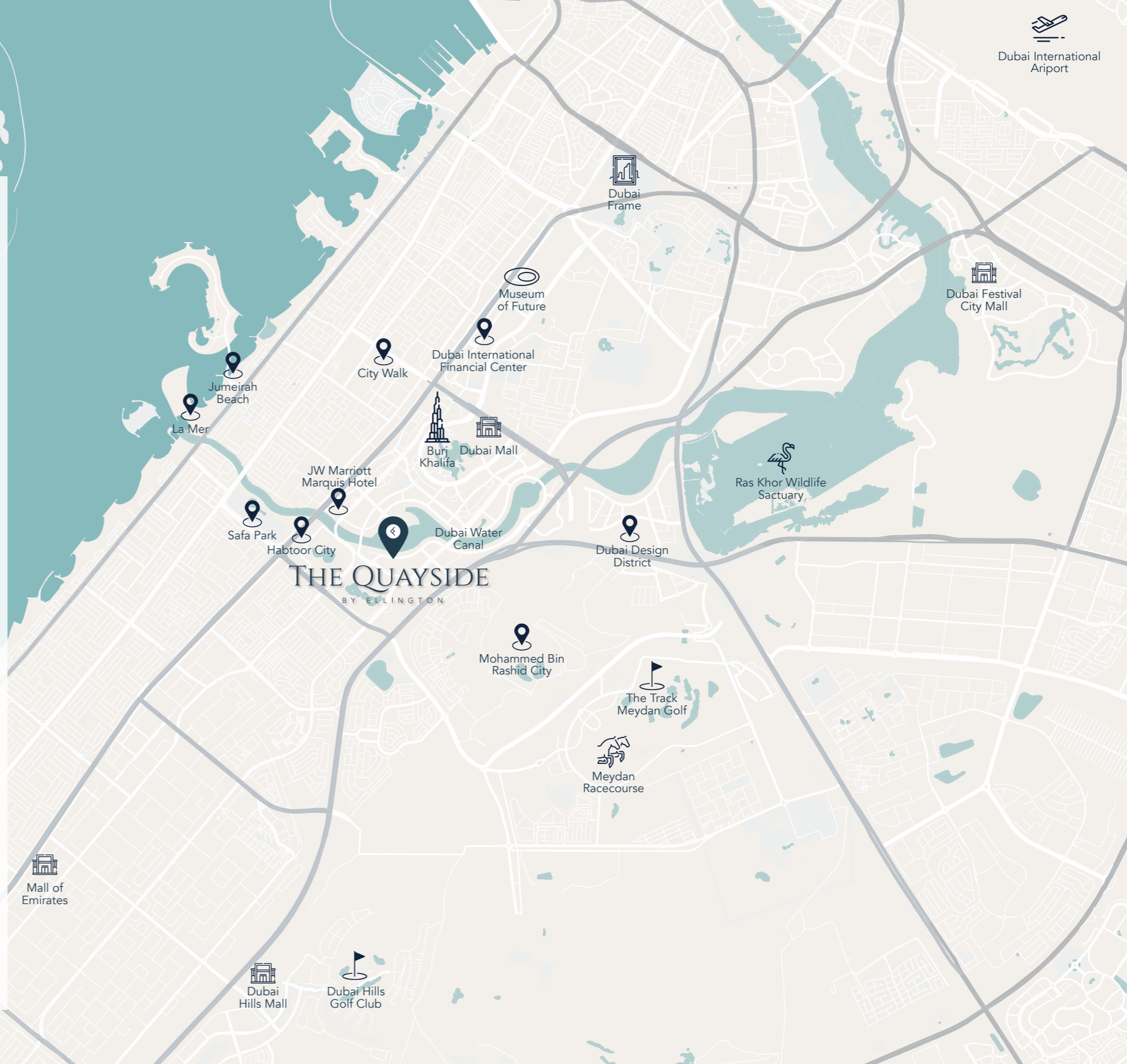
17  
**MINUTES**  
Dubai Design District

18  
**MINUTES**  
Dubai International Airport

20  
**MINUTES**  
La Mer Beach

20  
**MINUTES**  
Burj Al Arab

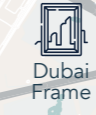
22  
**MINUTES**  
Palm Jumeirah



Dubai International Ariport



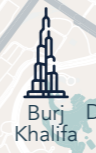
Dubai Festival City Mall



Dubai Frame



Museum of Future



Burj Khalifa



Dubai Mall



City Walk



Dubai International Financial Center



JW Marriott Marquis Hotel



La Mer



Jumeirah Beach



Safa Park



Habtoor City



Ras Khor Wildlife Sactuary



Dubai Design District



Mohammed Bin Rashid City



The Track Meydan Golf



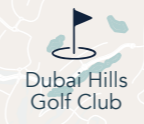
Meydan Racecourse



Mall of Emirates



Dubai Hills Mall



Dubai Hills Golf Club

THE QUAYSIDE  
BY ELLINGTON



# THE QUAYSIDE

BY ELLINGTON

Inspired by its peerless location overlooking Dubai's iconic skyline and the shimmering, ever-changing waterways, driven by chic contemporary design and crafted to enable life lived in style, The Quayside by Ellington Properties is an architectural expression of modern excellence. Located in the heart of Business Bay, relaxation and tranquillity can be uncovered amidst the pulse of Dubai's most dynamic neighbourhood. With an array of luxuriously designed residences, breathtakingly communal spaces and resort-style amenities designed to elicit relaxation, interconnectivity and joy. The Quayside matches a sensory journey with the utmost in liveability.

# BUILDING CONFIGURATION

## ELEVATORS

3 passenger elevators  
1 service elevator

---

## ANTICIPATED SERVICE CHARGE

AED 18 per sq.ft

---

## ANTICIPATED COMPLETION DATE

Q1 2026

---

## PARKING

Studio, 1 and 2 bedrooms: 1 car parking space  
3 bedrooms: 2 car parking spaces

---

## OWNERSHIP

Freehold

RESIDENTIAL  
FLOORS

PODIUM  
FLOORS

GROUND  
FLOOR



## SIZE RANGE PER UNIT TYPE

### STUDIO

From 542 sq. ft

### 1 BEDROOM

From 758 sq. ft to 986 sq. ft

### 2 BEDROOM + MAIDS

From 1,420 sq. ft to 1,567 sq. ft

### 3 BEDROOM

From 1,420 sq. ft to 1,567 sq. ft

### 5 BEDROOM PENTHOUSE

From 10,004 sq. ft

---

## NUMBER OF UNITS PER TYPE

Studio = 15 units

1 bedroom = 46 units

2 bedroom + maids = 42 units

3 bedrooms = 14 units

Penthouse = 1 unit

---

## PRICE RANGE PER UNIT TYPE

### STUDIO

From 1,315,828

### 1 BEDROOM

From 1,787,828

### 2 BEDROOM + MAIDS

From 3,299,828

### 3 BEDROOM

From 4,226,828





DAY VIEW  
ACTUAL RESIDENTIAL DEVELOPMENT



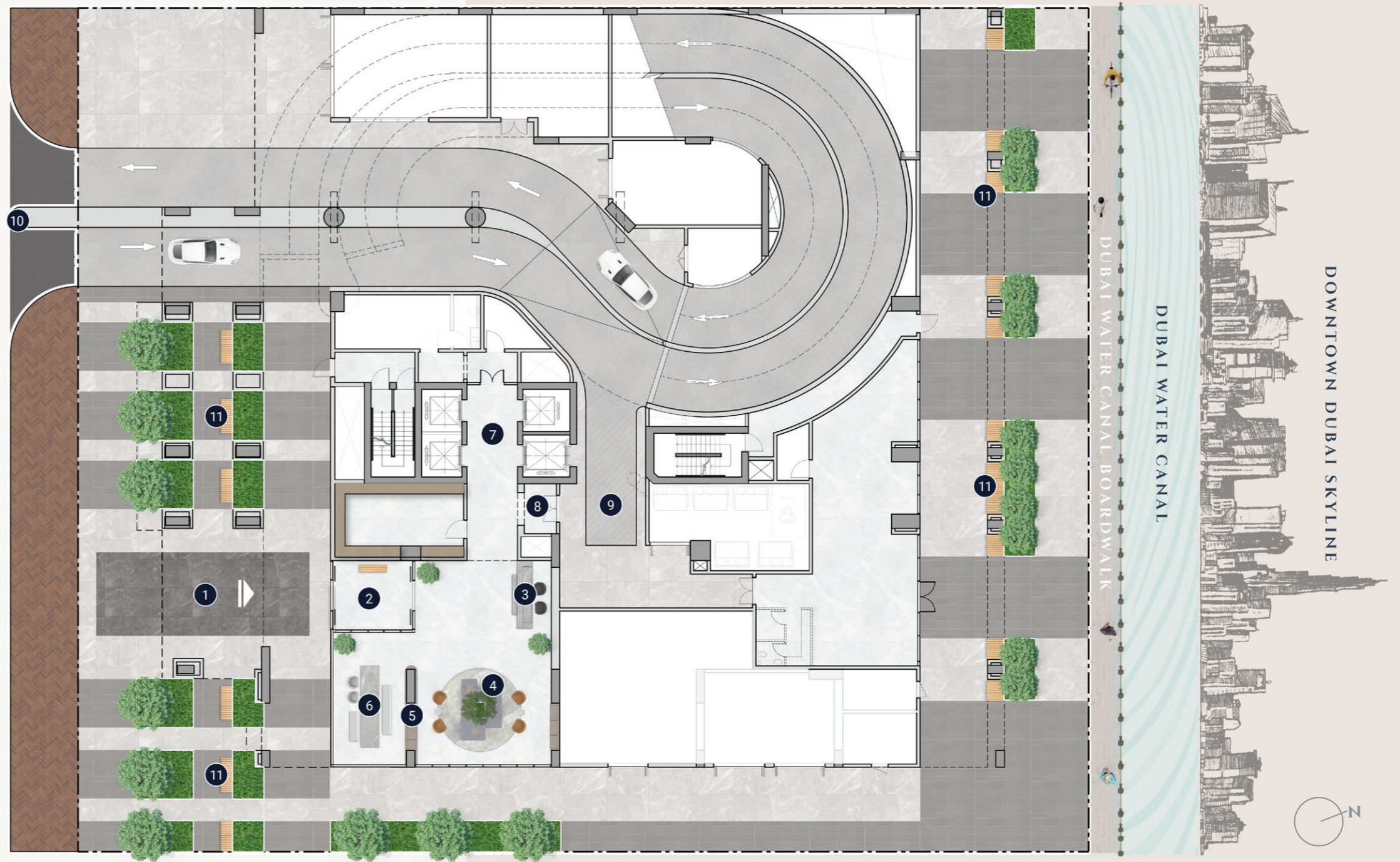
NIGHT VIEW  
ACTUAL RESIDENTIAL DEVELOPMENT





# GROUND FLOOR PLAN

- ① Main Entrance
- ② Lobby Entrance
- ③ Lobby Reception
- ④ Lobby Lounge
- ⑤ Library Wall
- ⑥ Communal Table
- ⑦ Lift Lobby
- ⑧ Access to Lift and Lobby
- ⑨ Move-in Truck Zone
- ⑩ Vehicle Entrance/Exit
- ⑪ Outdoor Seating Areas



# FIRST FLOOR PLAN

- ① Leisure & Lounge Pool
- ② Cascading Waterfall
- ③ Net Seating by the Pool
- ④ Pool Sun Loungers
- ⑤ Baja Shelf
- ⑥ Cabanas
- ⑦ Kids Pool
- ⑧ Outdoor Kids Play Area
- ⑨ Indoor Kids Play Area
- ⑩ Kids Bathroom
- ⑪ Male Spa Room
- ⑫ Female Spa Room
- ⑬ Zen Room
- ⑭ Fitness Studio
- ⑮ Clubhouse
- ⑯ Kitchenette
- ⑰ Outdoor Lounge Terrace
- ⑱ Outdoor Dining Area
- ⑲ Pizza Oven and Barbeque Area
- ⑳ Lift Lobby





LOBBY



ELLINGTON  
PROPERTIES

BOARDWALK ACCESS



9 323 528

EV CHARGING STATION + BICYCLE



POOL DECK



POOL LOUNGERS





KIDS POOL

FITNESS STUDIO





ELLINGTON  
PROPERTIES

CLUBHOUSE



SPA ROOMS

ZEN ROOM





PIZZA OVEN + BARBEQUE AREA

LIVING AREA









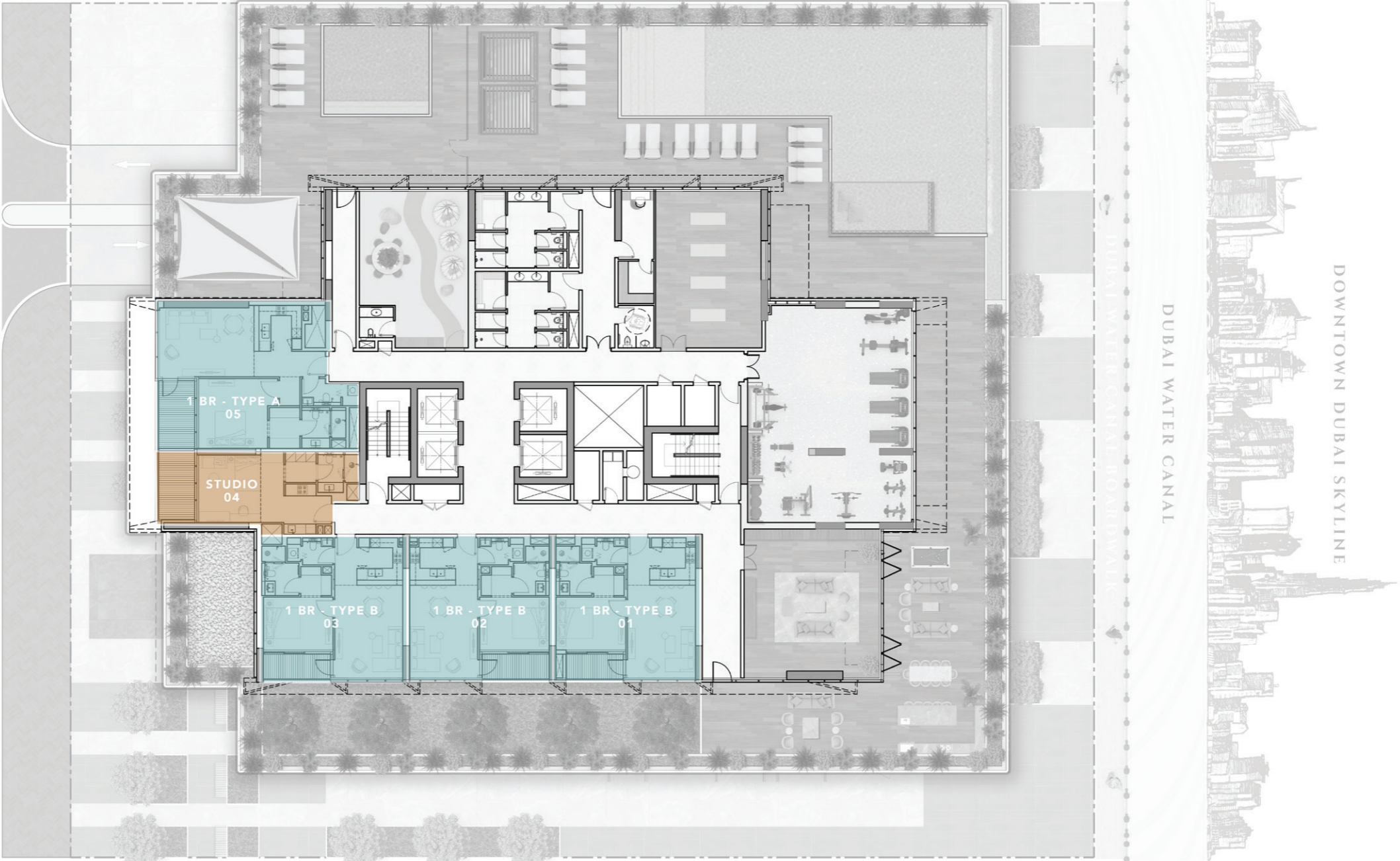
KITCHEN





# FLOOR PLANS

# 1ST FLOOR TYPICAL PLAN



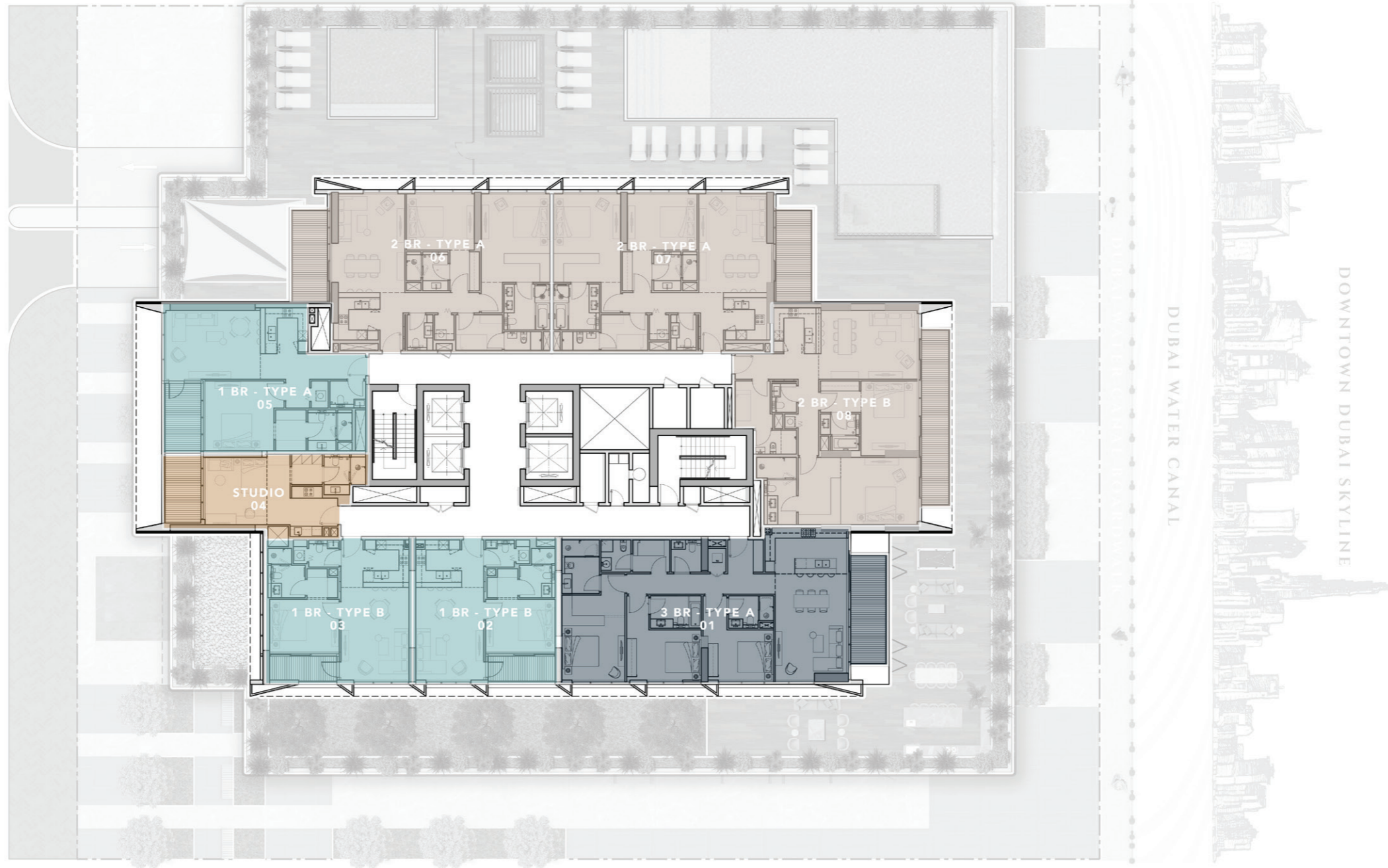
1ST FLOOR TYPICAL PLAN

 STUDIO APARTMENTS

 1 BEDROOM APARTMENTS



# 2ND - 15TH FLOOR TYPICAL PLAN



2ND-15TH FLOOR TYPICAL PLAN

  
STUDIO APARTMENTS

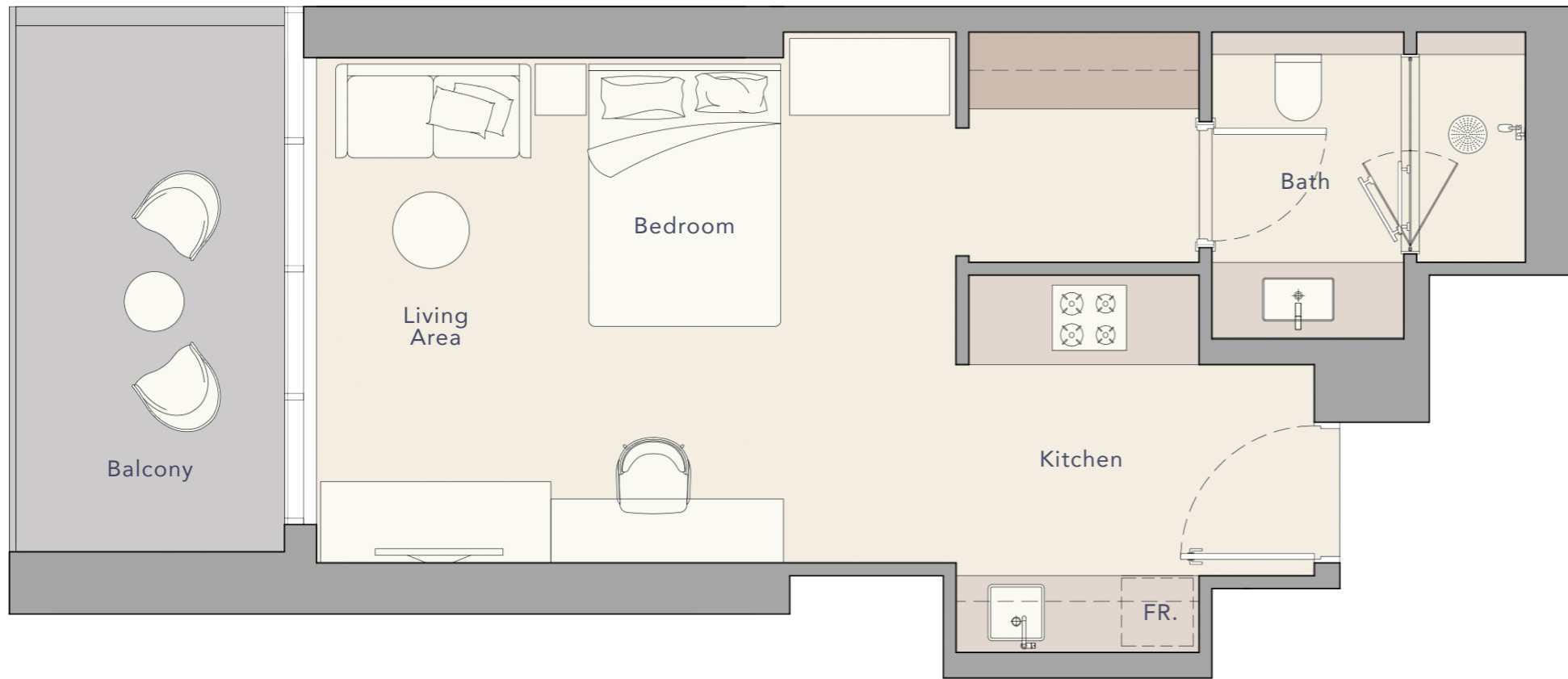
  
1 BEDROOM APARTMENTS

  
2 BEDROOM APARTMENTS

  
3 BEDROOM APARTMENTS



# STUDIO



Internal Living Area

Outdoor Living Area

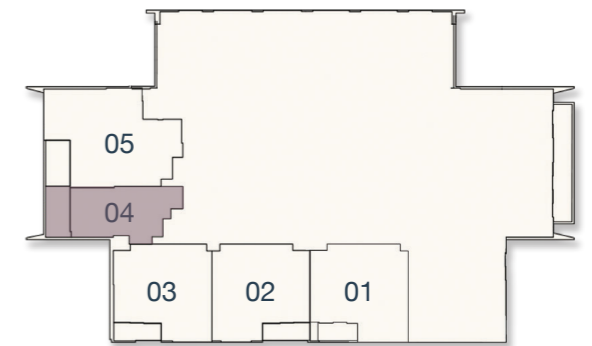
Total Living Area

438.52 sq.ft.

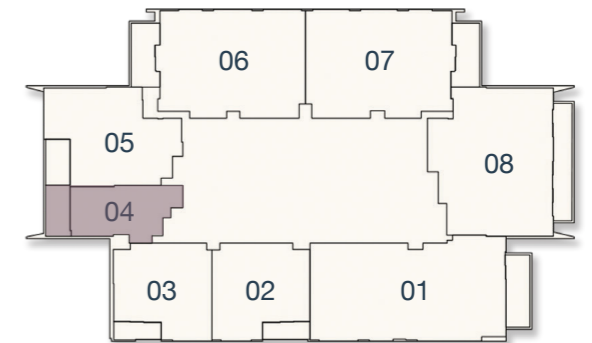
103.55 sq.ft.

542.07 sq.ft.

## 1<sup>ST</sup> FLOOR



## 2<sup>ND</sup> - 15<sup>TH</sup> FLOOR



# 1 BEDROOM TYPE A



Internal Living Area

Outdoor Living Area

Total Living Area

700.30 sq.ft.

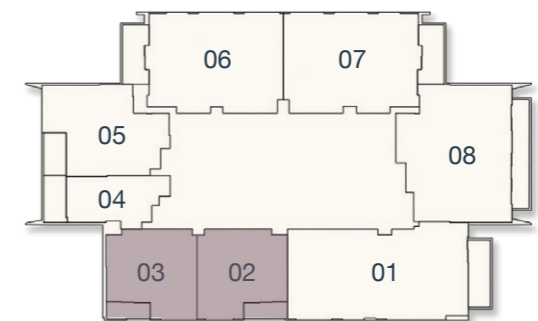
68.46 sq.ft.

768.76 sq.ft.

## 1<sup>ST</sup> FLOOR

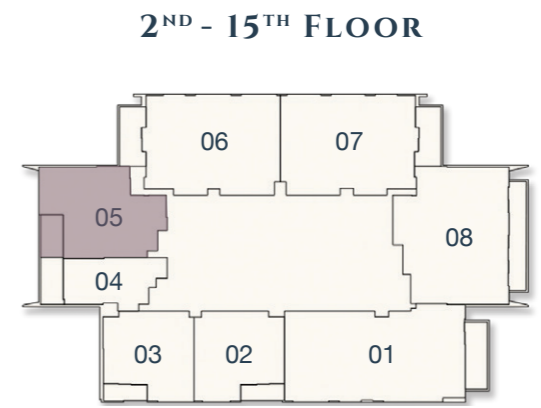
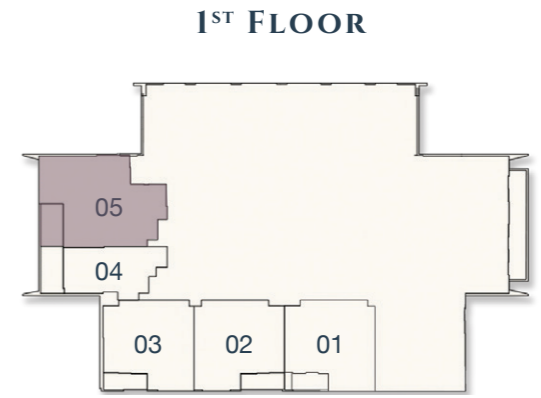


## 2<sup>ND</sup> - 15<sup>TH</sup> FLOOR



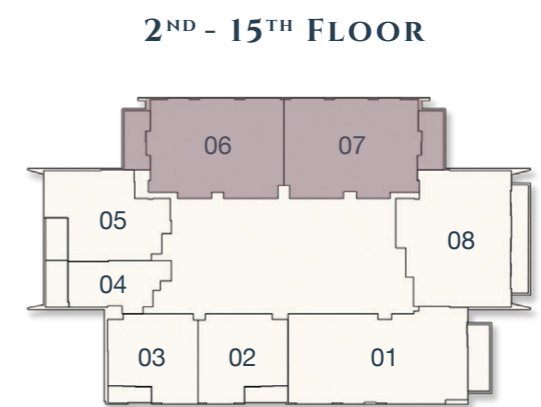
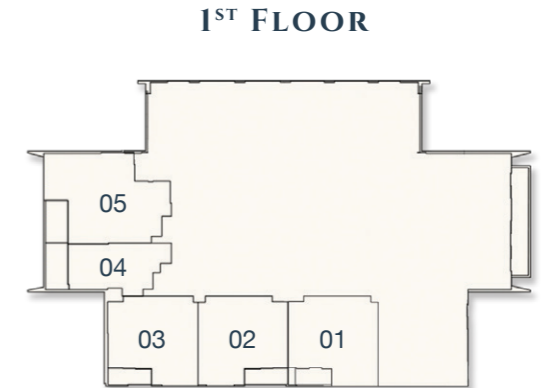


# 1 BEDROOM TYPE B



Internal Living Area	Outdoor Living Area	Total Living Area
893.19 sq.ft.	92.89 sq.ft.	986.08 sq.ft.

# 2 BEDROOM TYPE A



Internal Living Area	Outdoor Living Area	Total Living Area
1280.47 sq.ft.	139.93 sq.ft.	1420.41 sq.ft.

# 2 BEDROOM TYPE B



Internal Living Area

Outdoor Living Area

Total Living Area

1382.19 sq.ft.

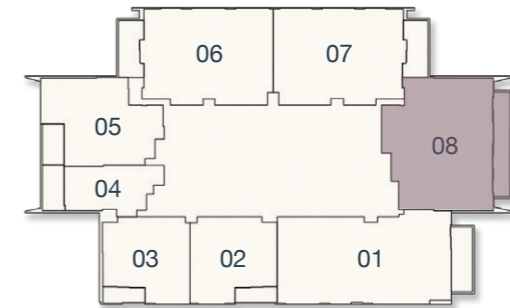
185.68 sq.ft.

1567.87 sq.ft.

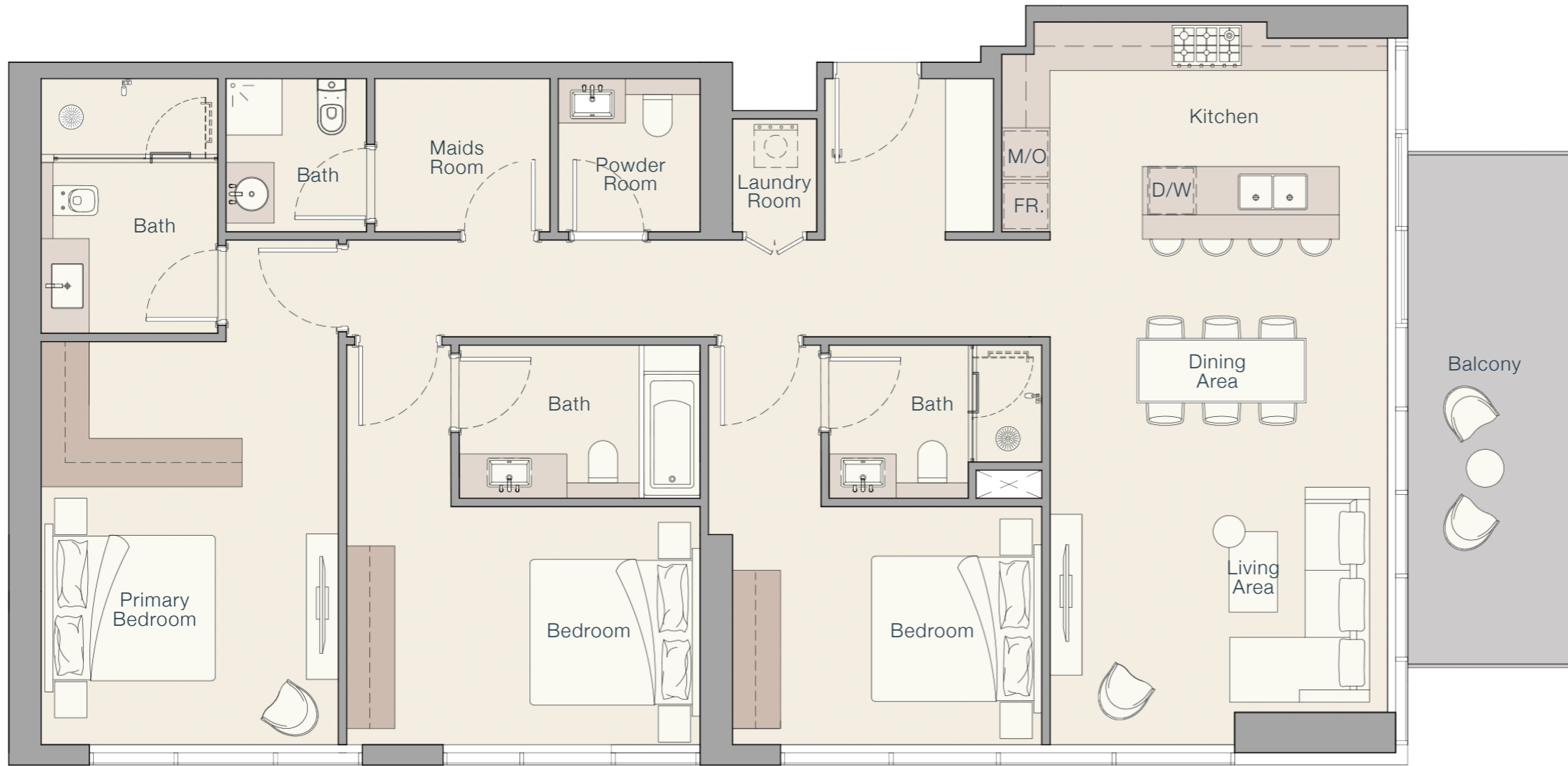
## 1<sup>ST</sup> FLOOR



## 2<sup>ND</sup> - 15<sup>TH</sup> FLOOR



# 3 BEDROOM TYPE A



Internal Living Area

Outdoor Living Area

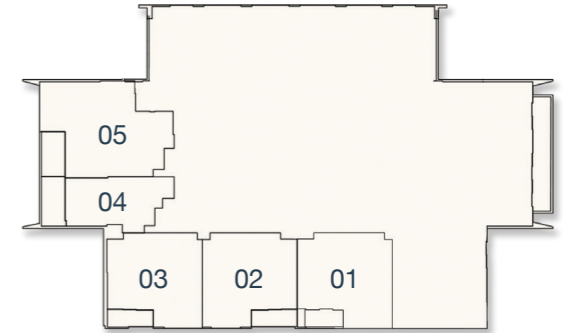
Total Living Area

1595.21 sq.ft.

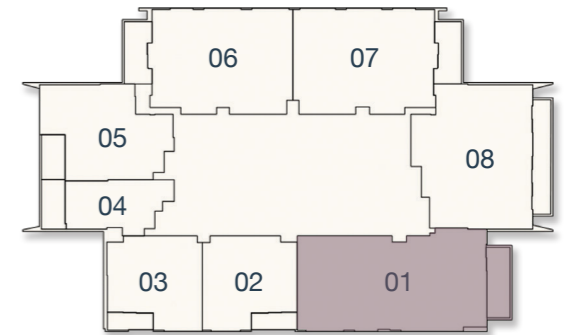
144.02 sq.ft.

1739.23 sq.ft.

## 1<sup>ST</sup> FLOOR



## 2<sup>ND</sup> - 15<sup>TH</sup> FLOOR



## PAYMENT PLAN

- **20%** At the time of booking
- **10%** 30 days after the reservation date
- **10%** 90 days after the reservation date
- **5%** 150 days after the reservation date
- **5%** 240 days after the reservation date
- **5%** On completion of 30% construction of the project
- **5%** On completion of 40% construction of the project
- **5%** On completion of 50% construction of the project
- **5%** On completion of 60% construction of the project
- **30%** On completion

# THE QUAYSIDE

BY ELLINGTON

800 8288  
info@ellingtongroup.com

ELLINGTONPROPERTIES.AE

The renderings and visualizations contained in this brochure are provided for illustrative and marketing purposes. While the information provided is believed to be accurate and reliable at the time of printing, only the information contained in the final Sales and Purchase Agreement will have any legal effect.